

Calibration Validation and Evaluation of CERES Maize Model under Temperate Conditions of Kashmir, Using DSSAT 4.7

Asma Fayaz^{1*}, B. Ahmad Lone², Shilpa^{1*}, Sameera Qayoom², N. A. Dar²,
Z. A. Dar², Faisal Rasool², Sandeep Kumar², N. S. Khuroo², P. Singh²
and Najma Andrabi²

¹Chandigarh University, India.

²Sher-e-Kashmir University of Agricultural Sciences and Technology, Kashmir, India.

Authors' contributions

This work was carried out in collaboration among all authors. Author AF designed the study, performed the statistical analysis, wrote the protocol and wrote the first draft of the manuscript. Authors BAL, Shilpa and SQ managed the analyses of the study. Authors NAD, ZAD, FR and SK managed the literature searches and authors NSK, PS and NA managed the editing inserting the corrections of gallery proof. All authors read and approved the final manuscript.

Article Information

DOI: 10.9734/CJAST/2020/v39i2530883

Editor(s):

- (1) Dr. Umar Nirmal, Centre of Advanced Mechanical and Green Technology, Malaysia.
- (2) Dr. Alessandro Buccolieri, Università del Salento, Italy.
- (3) Dr. Chen Chin Chang, Hunan Women's University, China.

Reviewers:

- (1) Anca Melintescu, National Institute for Physics and Nuclear Engineering, Romania.
- (2) Zablodskiy Mykola, National University of Life and Environmental Sciences of Ukraine, Ukraine.

Complete Peer review History: <http://www.sdiarticle4.com/review-history/60045>

Original Research Article

Received 09 June 2020
Accepted 14 August 2020
Published 25 August 2020

ABSTRACT

Field experiments were conducted at Shalimar Campus of Sher-e-Kashmir University of Agricultural Sciences and Technology of Kashmir during 2015 and 2016 to study the growth and yield of maize at different planting dates and Nitrogen levels with further simulating Maize growth and yield at different agro-ecological zones (altitudes) of Kashmir valley at fixed dates with varied nitrogen levels and at fixed nitrogen level with varied dates of sowing. Experiment was laid in split plot design with three dates of sowing i.e. 22nd May, 30th May and 8th June assigned to main plot and four levels of nitrogen i.e. 80 kg N ha⁻¹ (N₁), 120 kg N ha⁻¹ (N₂), 160 kg N ha⁻¹ (N₃) and 200 kg N ha⁻¹ assigned to sub plot. Genetic coefficients of maize crop variety (Shalimar Maize composite-4) were generated

*Corresponding author: E-mail: alonebilal127@gmail.com;

for calibrated and validation of CERES Maize model using DSSAT 4.5. Simulation was carried out for different dates of sowing viz, 1st May, 10th May, 22nd May, 30th May, 8th June, 20th June and 30th June at same fertility levels of 160 kg N ha⁻¹, 60 kg P₂O₅ ha⁻¹ and 30 kg K₂O ha⁻¹ for all the locations. Simulated studies carried at different locations indicated that sowing of Maize on 30th May (D₂) with 200 kg N ha⁻¹ (N₄) predicted highest grain yield in location Kokernag which was followed by location Srinagar on same date 30th May (D₂) with 160 kg N ha⁻¹ (N₃) and lowest yield was recorded in district Kupwara. Maximum Biological yield was also recorded at 30th May with 160 kg N ha⁻¹ (N₃). Among the district Kokernag recorded maximum biological yield with delayed maturity (160 days) simulation studies were carried out with 7 dates of sowing at fixed level of Nitrogen in all the districts. Simulated studies of maize showed that sowing on 30th May with 160 kg N ha⁻¹ (N₃) recorded maximum LAI, Biological yield and grain yield. However, highest grain yield was recorded with location Kokernag and lowest was recorded with location Kupwara.

Keywords: Maize; DSSAT; CERES model; yield; biological yield; simulation.

1. INTRODUCTION

Maize is the world's most widely grown cereal and it is ranked third among major cereal crops. In the developed countries, maize is grown for animal feed and used as raw material for industrial products such as starch, glucose and dextrose [1]. Maize production requires an understanding of various management practices as well as environmental conditions that affect crop performance [2]. Of all management aspects of growing a maize crop, planting date is probably the most subject to variation because of the very great differences in weather at planting time between seasons and within the range of climates [3]. Farmers who plant maize early are concerned about frost, poor emergence and early plant growth while on other hand farmers who plant maize late are concerned about that how late planting might affect the final grain yield and grain moisture [4]. Drought occurring at flowering can lead to greater losses than when it occurs at other developmental stages [5]. At very early sowing there is a high temperature which has detrimental effects like inhibits pollination, increase respiration and transpiration rates and thus limit dry matter accumulation, which in turn reduces the grain yield [6]. If sowing is delayed then the plant doesn't get the proper conditions for its growth so it results in low productivity or complete failure of the germination. Grain yield of maize decreases with the delay of sowing [7]. If a plant is planted earlier then it will give some level of productivity. Maize yield is substantially reduced by hot, dry conditions at tasseling. It is important that this growth stage be reached when there would normally be maximum chance of cloud cover and reasonable moisture [8].

Low growth yield rate in the late sown crop is mainly due to unfavorable environmental effects

encountered during the reproductive phase and due to the low net assimilation rate [9]. Maize crop is categorized as a very exhaustive crop because of its very high demand for the nutrients specially nitrogen, phosphorus and potassium from the soil. Nitrogen is an essential component of amino acids, which are the building blocks of proteins and is also a part of the DNA molecule, so it plays a very important role in cell division and reproduction. The chlorophyll molecule also contains nitrogen. Nitrogen deficiency most often results in slow and stunted growth along with chlorosis. Most of the nitrogen taken up by plants from the soil in the forms of NO₃⁻. Amino acids and proteins can only be built from NH₄⁺ so NO₃⁻ must be reduced with split application of ammonical form of nitrogen. Nitrogen is usually applied in splits in the field to avoid various nitrogen losses. Split application fulfil the crop requirements at the time of need. The process based dynamic simulation crop models based on soil, crop and weather factors could be effective research tools for planning alternative strategies for crop management, land use and water management [10] and also a useful tool for planning and developing technological interventions in diverse areas like Kashmir valley.

2. MATERIALS AND METHODS

The investigation was conducted at the experimental farm of Division of Agronomy at main Campus of Sher-e-Kashmir University of Agricultural Sciences and Technology of Kashmir, Shalimar Srinagar which is situated 16 km away from city center that lies between 34.08°N latitude and 74.83°E longitude at an altitude of 1587 meters above the mean sea level. A validated model with known genetic constants for varieties can be powerful tool for studying the performance of varieties in

contrasting environments, soil types, diverse cultural practices and management inputs [11]. The DSSAT v 4.5 CERES-Maize Crop Simulation Model which was tested over a wide range of environments [12,13]. In addition to agronomic study data generated was used to calibrate and validate CERES-Maize model and simulation studies at various altitudes of the valley. The climate is temperate type characterized by hot summers and severe winters. The average annual precipitation over past twenty five years is 793.72 mm (Division of Agronomy, SKUAST-Kashmir) and more than 80 per cent of precipitation is received from western disturbances during winter/spring months. During crop growth period (22nd May - 4th October) wettest months during crop growth period were September (320.6 mm) and July (101.4 mm) during 2015 and 2016, respectively. The mean maximum and minimum temperature for entire crop growth period of maize crop for 2015 was 33.5 and 20.0°C, respectively and corresponding values for 2016 were 34.0 and 20.5°C corresponding values of mean maximum and minimum Temperature for location Larnoo (Kokernag) at altitude 2000 meters was 30.7 and 4.9°C during 2015 and 32.1 and 8.0°C during 2016 with rainfall of 639.4 mm and 260.1 mm during 2015 and 2016 respectively. Maximum and minimum temperature values for mid altitude (1800 m) Kupwara was 32.7 and 5.6°C during 2015 and 34.0 and 6.9°C during 2016 respectively. Detailed soil and weather information from Srinagar, Kupwara and Kokernag locations were collected according to the minimum data sets required for calibration of CERES–maize model as suggested by [14]. Soil was silty clay loam, with neutral in reaction and medium in available nitrogen, phosphorus and potassium. Sun shine hours recorded for each station was converted to solar radiation as an input parameter for weather data. The experiment included three dates of sowing with four nitrogen levels was laid out in split plot design with three replications assigning three planting dates 22nd May (D₁), 30th May (D₂), 8th June (D₃) to main plots and four nitrogen levels 80 kg (N₁), 120 kg (N₂), 160 kg (N₃), 200 kg (N₄) to sub-plots. Certified seed of maize variety “C₄” was used in the experiment. It has vigorous medium tall plants with a tendency to bear 2 cobs plant⁻¹. Cobs are long with conical cylindrical ears. Grains are flint type with orange yellow colour. All necessary management practices were carried out as per standard recommendation for maize crop.

3. RESULTS AND DISCUSSION

All locations were tested with 7 dates of sowing and tried at same fertility level. Simulation with respect to dry weight, grain yield and LAI were studied. The dates tested were 1st May, 10th May, 22nd May, 30th May, 8th June, 20th June and 30th June at same fertility levels of 160 kg N ha⁻¹, 60 kg P₂O₅ ha⁻¹ and 30 kg K₂O ha⁻¹. Results (Fig. 1) revealed that at location Srinagar maximum LAI of 7.5 was observed between 45 days after sowing to 60 days after sowing. When sowing was carried out on 30th of May. Simulated Dry weight kg ha⁻¹ showed Maximum at 30th May sowing and least dry weight were observed when crop was sown on 30th June (Fig. 2). Simulated grain yield (Fig. 3) revealed that maximum grain yield were recorded when sowing was done at 30th May and least grain yield when sowing was done at 30th June. The results are in conformity with the findings of Bergamaschi et al. (2013), who reported that Simulations of grain yields by the Glam-Maize model are highly correlated with observed yields at large spatial scales, with variable correlations at smaller spatial scales. Simulated LAI revealed from the (Fig. 5) at Kokernag that maximum LAI was recorded more than 7 at all the dates of sowing tested. However time span of having maximum LAI more than 7 was observed when sowing of crop was done on 1st May with respect to dry weight maximum was observed when sowing was done on 1st May which was closely followed by 10th May but less dry weight kg ha⁻¹ was observed at last date of sowing tested i.e. on 30th June (Fig. 6). The result are in agreement with Saseendran et al., [15] which reported that sometimes large differences in LAI simulations by RZWQM (Root Zone Water Quality Model was developed in the 1990's by a team of USDA Agricultural Research Service (ARS) scientists) compared with LAI observed in the field indicate a need for improvement of the crop development part of the generic crop model for better simulation of planting date effects on crop growth and development.

Grain yield at Kokernag shows variability ranging from 48 to 75 q ha⁻¹ (Fig. 4) it is observed that maximum grain weight of about 75 q ha⁻¹ was observed when sowing was done on 1st May which was closely followed by 10th May and 22nd May. However, other dates tested gave less yield with minimum yield observed at 30th June i.e. delayed sowing. Furthermore, delay in sowing time along with addition of more

nitrogen fertilizers failed to show any significant difference in both grain and straw yield. The results are in agreement with Saseendran et al. [15].

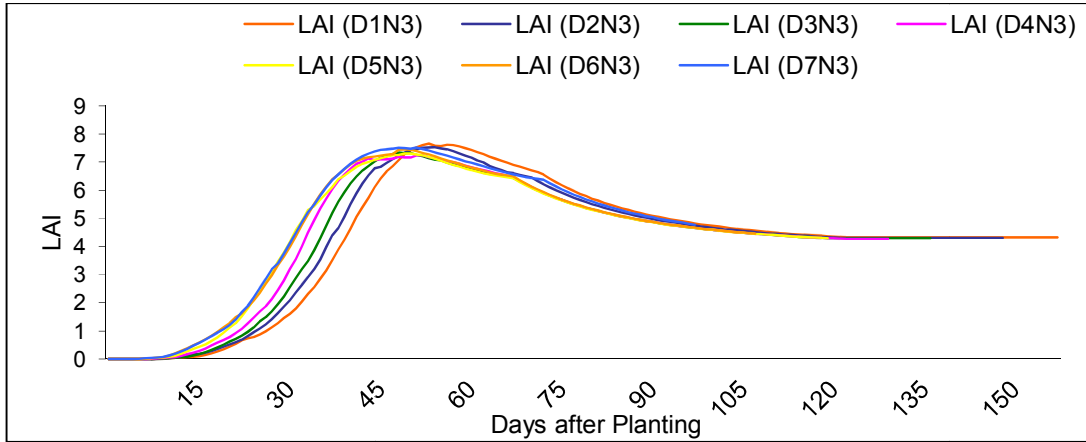


Fig. 1. Simulated LAI on different date of sowing at nitrogen level 160 kg N ha⁻¹ (Srinagar)

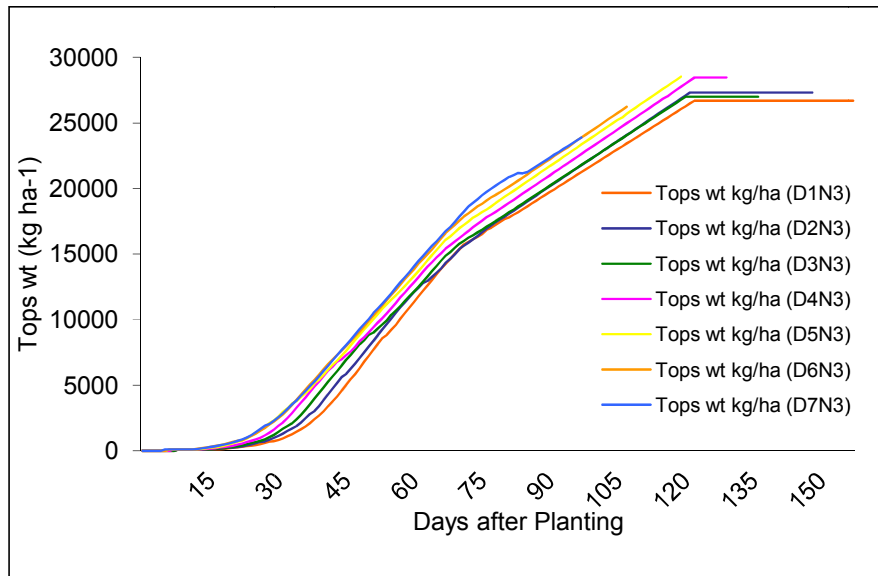


Fig. 2. Simulated Tops weight (dry weight) on different date of sowing at nitrogen level 160 kg N ha⁻¹ (Srinagar)

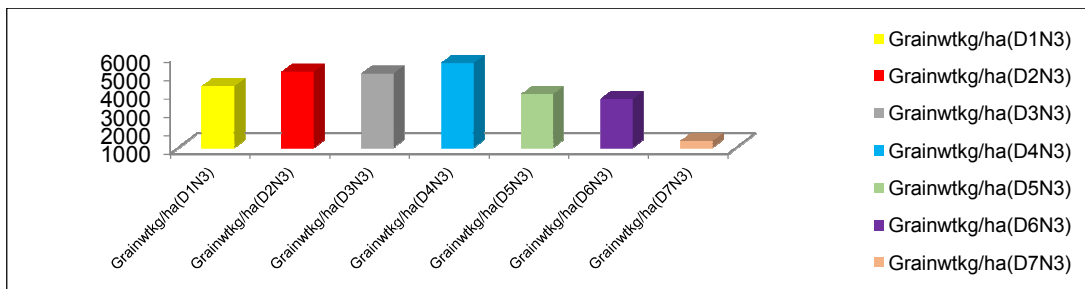


Fig. 3. Simulated grain weight on different date of sowing at nitrogen level 160 kg N ha⁻¹ (Srinagar)

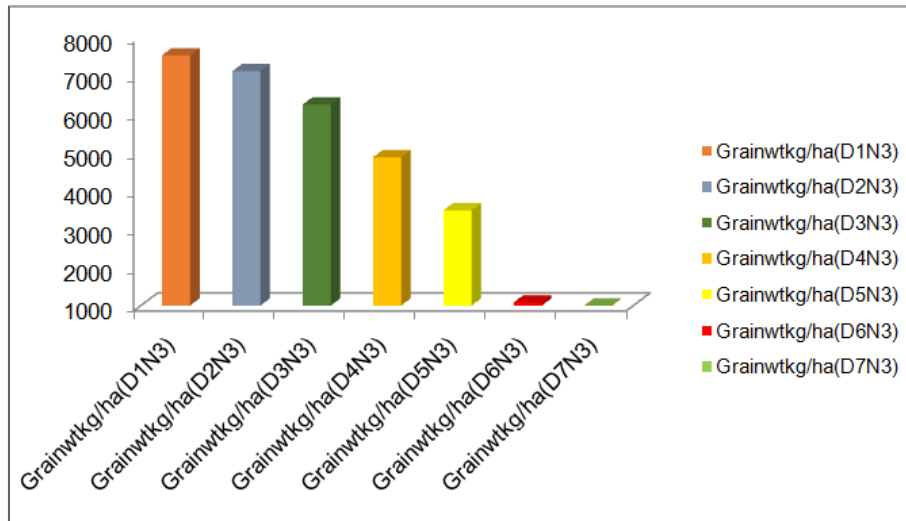


Fig. 4. Simulated grain weight on different date of sowing at nitrogen level 160 kg N ha-1 (Kokernag)

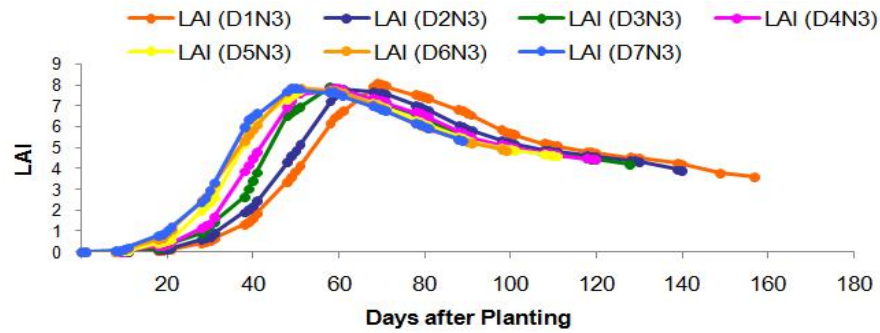


Fig. 5. Simulated LAI on different date of sowing at nitrogen level 160 kg N ha-1 (Kokernag)

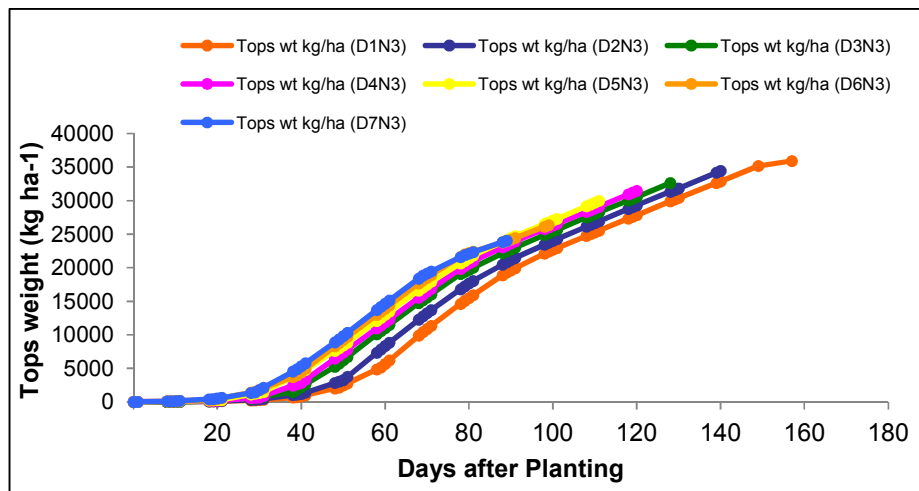


Fig. 6. Simulated tops weight (dry weight) on different date of sowing at nitrogen level 160 kg N ha-1 (Kokernag)

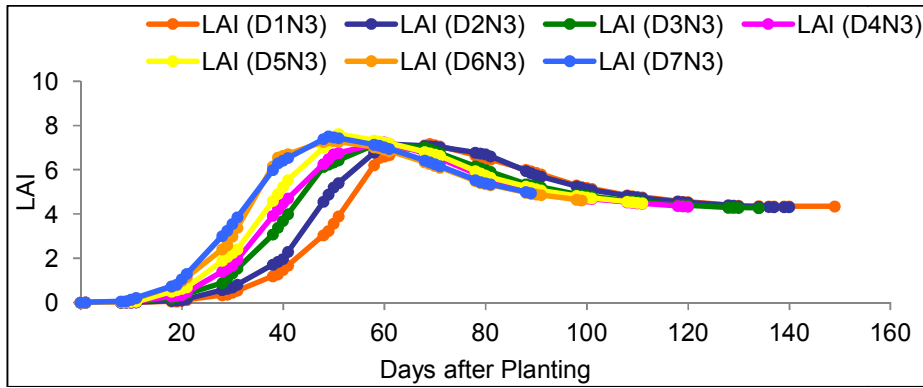


Fig. 7. Simulated LAI on different date of sowing at nitrogen level 160 kg N ha-1 (Kupwara)

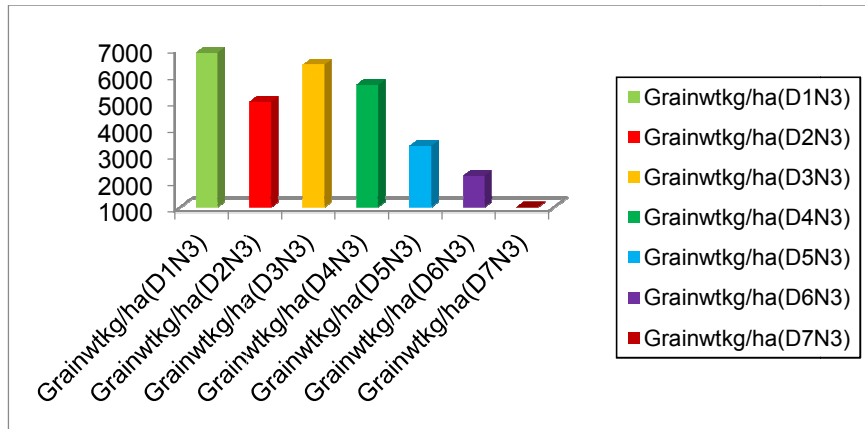


Fig. 8. Simulated grain weight on different date of sowing at nitrogen level 160 kg N ha-1 (Kupwara)

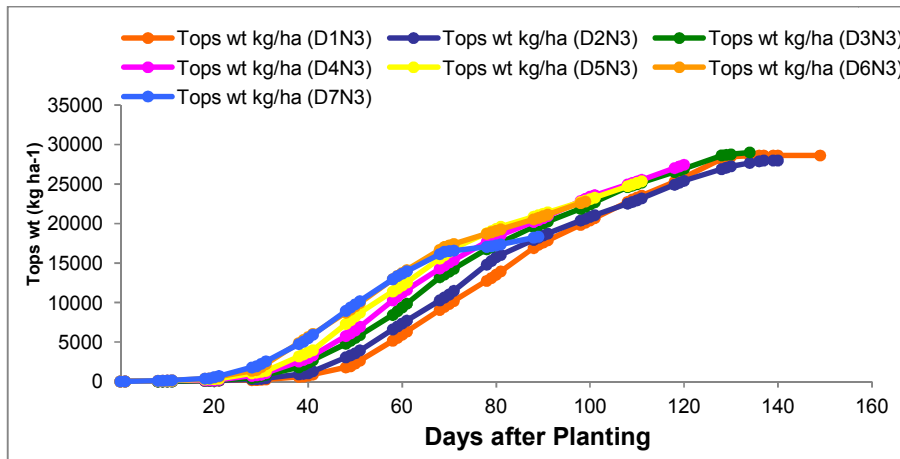


Fig. 9. Simulated tops weight (dry weight) on different date of sowing at nitrogen level 160 kg N ha-1 (Kupwara)

Simulated LAI (Fig. 7) at Kupwara showed that Maximum LAI at 8th June sowing (7.63) at almost 56-60 days after sowing. However the range of LAI was between 7 to 8. With respect to dry

weight (Fig. 9) maximum dry weight was observed when sowing was done on 1st May and least dry weight at 30th June. However sowing on 1st May closely follow 10th May sowing and 22nd May. Grain yield was observed maximum on 1st May sowing (68.46 kg ha⁻¹) and least on 8th June sowing which was followed by sowing on 20th June and 30th June (Fig. 8). The results are in agreement with Bauder et al. [16] which give optimum corn planting dates ranging from 20 April to 15 and a 2 to 5% drop in yield as planting date is moved 12 d before or after the optimum planting date.

4. CONCLUSION

Simulation studies revealed that cultivation of Maize variety performed well at other locations too which in turn performs better at Kokernag followed by Kupwara. Simulation studies at all the three ecological zones with different dates of sowing showed that maize should be sown on the 2nd to 3rd fortnight of May to get maximum yield. Under agro-climatic conditions of Kashmir valley crop growth period during summer months is restricted due to low temperature during spring and autumn months. Therefore, early sowing (30th May) of maize is recommended for highest yield, though initial growth period is subjected to low temperature.

COMPETING INTERESTS

Authors have declared that no competing interests exist.

REFERENCES

1. Food and Agricultural Organization (FAO). Yearbook of maize production. FAO, Rome, Italy. 1999;45:265.
2. Eckert D. Corn production in Ohio; 1995. Available:<http://ohioline.osu.edu/b472/htm>
3. Otegui ME, Nicolini MG, Ruiz RA, Dodds PA. Sowing date effects on grain yield components for different maize genotypes. Journal of Agronomy. 1995;87:29-33.
4. Lauer EJ, Carter PR, Wood TM, Diezel G, Wiersma DW, Rand RE, Mlynarek MJ. Corn hybrid response to planting date in Northern Corn Belt. Journal of Agronomy. 1995;91:834-839.
5. Grant RF, Jackson BS, Kiniry JR, Arkin GF. Water deficits timing effects on yield components in maize. Journal of Agronomy. 1989;81:61-65.
6. Hortick HJ, Arnold CY. Temperature and the rate of development of sweet corn. Proc. Amer. Horti. Sci.1965;69:400-404.
7. Obi ME. Influence of planting date on maize grain yield in southeastern Nigeria. African Journal of Agricultural Sciences. 1988;12(1-2):49-59.
8. Price T, Darwin. Growing dry land maize. Agnote, Australia. 1997;704(33):3.
9. Staggenborg SA, Fjell DL, Derlin DL, Gorden WB, Maddux LD, Marsh BH. Selecting optimum planting date and plant population for dry land corn in Kansas. Journal of Agricultural Production. 1999; 12:85-90.
10. Matthews RB, Stephens W, Hess T, Middleton T, Graves A. Applications of crop/soil simulation models in tropical agricultural systems. Advances in Agronomy. 2002;76:31-112.
11. Boote KJ. Concepts for calibrating crop growth models. In DSSAT Version 3-4.1999;181-194.
12. Tsuji GY, Uehara G, Balas S. DSSAT v 3. University of Hawaii, Honolulu, Hawaii; 1994.
13. Hoogenboom G, Wilkens PW, Suji T, GY. DSSAT v 3. University of Hawaii, Honolulu, Hawaii. 1999;4.
14. Jones CA, Kiniry JR. CERES-Maize: A simulation model of maize growth and development. Texas A&M University Press, College Station, Texas; 1986.
15. Saseendran S, Anapalli L, Ma DC, Nielsen MF, Vigil, Ahuja LR. Simulating planting date effects on corn production using RZWQM and CERES-Maize Models. Agronomy Journal. 2005; 97:58-71.
16. Bauder T, Waskom R, Schneekloth J, Alldredge J. Best management practices for Colorado corn. Bull. XCM574A. Colorado State Univ. Coop. Ext., Fort Collins; 2003.

© 2020 Fayaz et al.; This is an Open Access article distributed under the terms of the Creative Commons Attribution License (<http://creativecommons.org/licenses/by/4.0>), which permits unrestricted use, distribution, and reproduction in any medium, provided the original work is properly cited.

Peer-review history:

The peer review history for this paper can be accessed here:
<http://www.sdiarticle4.com/review-history/60045>