



# **Analysis of the Relationship between Internal and External Variables and the Level of Women's Participation in Development Planning in Lintongnihuta Subdistrict, Humbang Hasundutan Regency**

**Roudur Imelda Situmorang <sup>a\*</sup>, Satia Negara Lubis <sup>b</sup>  
and Hamidah Harahap <sup>b</sup>**

<sup>a</sup> *Regional and Rural Development Planning, Graduate School, Medan, Universitas Sumatera Utara, Indonesia.*

<sup>b</sup> *Regional and Rural Development Planning, Lecturer, Medan, Universitas Sumatera Utara, Indonesia.*

## **Authors' contributions**

*This work was carried out in collaboration among all authors. All authors read and approved the final manuscript.*

## **Article Information**

DOI: 10.9734/SAJSSE/2024/v21i1763

## **Open Peer Review History:**

This journal follows the Advanced Open Peer Review policy. Identity of the Reviewers, Editor(s) and additional Reviewers, peer review comments, different versions of the manuscript, comments of the editors, etc are available here: <https://www.sdiarticle5.com/review-history/111454>

**Original Research Article**

**Received: 02/12/2023**

**Accepted: 29/12/2023**

**Published: 09/01/2024**

## **ABSTRACT**

This study delves into the multifaceted participation of women in Village Development Planning Deliberation (Musrenbangdes) within the Lintongnihuta District, analyzing the influence of various factors like age, education, occupation, income, and duration of residence. Employing an eight-question Likert scale, the research measures women's engagement and utilizes quantitative

\*Corresponding author: Email: [roudur.situmorang@gmail.com](mailto:roudur.situmorang@gmail.com);

descriptive data analysis, including frequency tables. The study employs cross-tabulation analysis (chi-square test) and validity tests with the Pearson Product-Moment formula through SPSS v24 software to determine relationships between internal and external factors and their impact on women's participation. Findings underscore Musrenbangdes as a substantive platform for authentic expressions of women's aspirations, revealing significant positive correlations between participation and internal factors such as age, education, communication, and leadership. While all proposals are accepted, government scrutiny precedes execution. The study advocates enhancing women's involvement through targeted improvements, childcare support, and health education, offering valuable insights for a more inclusive and effective development planning process.

*Keywords: Women's participation; internal factor; empowerment; musrenbangdes; development.*

## 1. INTRODUCTION

Gender disparity remains a critical concern in human development, prompting government initiatives for equality across sectors such as education, health, economy, politics, and socio-cultural domains. Defined socially, gender roles are portrayed theatrically, indicating femininity or masculinity [1].

Employing gender equality as a developmental strategy involves enhancing women's participation from planning to program realization [2]. Women in policymaking positions significantly contribute to public involvement, reinforcing control, appreciation, and protection of their rights [3].

In the public domain, women also represent fellow women with unheard voices. Achieving representation holds potential for improved well-being and addressing issues surrounding women in society [4].

Dedications on women's participation in the Village Consultative Body (BPD) include studies by Febriyanti Valeria Roito and Lisna Puspita Zebua [5]. Unlike previous work comparing villages, this research examines women's participation from a gender equality perspective. Another dedication by Nyoman Adi Jaya Prawira, Bandiyah, and Muhammad Ali Azhar [6] outlines political representation and the appointment process of women members in BPD.

Development planning in Lintongnihuta Subdistrict, Humbang Hasundutan Regency, is integral for sustainable and equitable development. Women's crucial role in the planning process is underscored by Vivekananda Darwin, [7] emphasizing that national progress hinges on respecting women.

However, challenges persist in Musrenbangdes activities in Lintongnihuta Subdistrict, with

women's participation below 30%. Varied levels of participation among villages and insufficient attention to women's interests, especially in education, indicate a need for focused analysis.

M. Syukuri's 2023 research on "Gender Policies of the New Developmental State" highlights gaps in new participatory village governance policies, focusing narrowly on economic aspects. In contrast, Rachael's 2023 study, "Brokerage, Power, and Gender Equity," sheds light on women's marginalization in challenging societal norms.

This research aims to analyze factors influencing women's participation in Musrenbangdes in Lintongnihuta Subdistrict, Humbang Hasundutan Regency, contributing insights into local development dynamics while reinforcing gender equity aspects.

## 2. METHODOLOGY

This quantitative and descriptive study aims to analyze women's participation levels in Village Development Planning Deliberations (Musrenbangdes) in the Lintongnihuta Subdistrict, Humbang Hasundutan Regency, North Sumatra Province, conducted from September to November 2023.

### 2.1 Population and Sampling

The research population includes all women participating in Musrenbangdes in 2023, totaling 251 individuals (Table 1). The sample size of 72 individuals was determined using the Slovin formula with a tolerated error of 10%.

### 2.2 Sampling Technique

The total population of women attending Musrenbangdes in the Lintongnihuta Subdistrict, Humbang Hasundutan Regency, in 2023 was

251 individuals. The sample selection technique utilized the Slovin formula Umar, [8] as follows:

$$n = \frac{N}{1 + Ne^2}$$

Where:

n is the sample size.  
N is the population size.  
e is the tolerated error.

A tolerated error of 10% was set for sample selection in this research. Applying the formula above, the calculated sample size is as follows:

$$n = \frac{251}{1 + (251)(0,1)^2}$$

n = 71,5 (rounded to 72 individuals).

### 2.3 Data Collection Instrument

The data collection instrument was a questionnaire, developed based on the research variables and operational definitions set according to Sugiyono's (2017) guidelines. The Likert scale, as described by Umar [8] was used to measure respondents' attitudes.

### 2.4 Measurement of Variables

The study measured internal and external factors affecting women's participation through a matrix development instrument. This involved assessing factors such as manipulation, therapy, notification, consultation, empowerment, partnership, delegated power, and community power using a Likert scale [9].

### 2.5 Additional Data Collection Details

To provide a more comprehensive understanding, the study used ordinal data measurement. The "instrument development matrix" or "instrument grid" was employed to facilitate the instrument's preparation. The ordinal measurement of variables was presented in Tables 3.2 and 3.3, detailing the degree of women's participation in Musrenbangdes and the criteria for factors influencing participation [10].

### 2.6 Data Analysis

To address the research questions, quantitative descriptive analysis, specifically frequency tables, was used. Cross-tabulation analysis (chi-square test) was employed to investigate the relationships between internal and external

factors and women's participation levels. The analysis was conducted using SPSS v24 software [11].

## 2.7 Validity and Reliability

The validity of the questionnaire was assessed using the Pearson Product-Moment formula (Sugiyono, 2002). Items with correlation coefficients (r) less than 0.3 were considered not valid. The reliability of the instrument was evaluated through the Cronbach alpha ( $\alpha$ ) analysis, aiming to ensure the consistency and representativeness of the items [12].

## 3. RESULTS

### 3.1 General overview of the research location

#### 3.1.1 Geographic conditions

Lintongnihuta Subdistrict is one of the subdistricts in Humbang Hasundutan Regency, North Sumatra Province. It is situated at 2°13'N - 2°20'N and 98°47'E - 98°57'E, covering an area of 18,126.03 hectares with a population of 67,226. The subdistrict comprises 22 villages, with Tapan Nauli being the largest at 1,576.96 hectares and Sibuntuon Partur the smallest at 502.25 hectares. Lintongnihuta Subdistrict is located at an elevation of 1,000 - 1,500 meters above sea level. Its boundaries are as follows: North - Bakti Raja and Muara Subdistricts; South - Pagaran Subdistrict, Tapanuli Utara Regency; West - Doloksanggul Subdistrict; East - Paranginan and Siborong-borong Subdistricts.

Topographically, Lintongnihuta Subdistrict consists of highland areas with both dry and wet soils. The air temperature ranges from 16°C to 19°C, with an annual rainfall of 2,000 - 3,000 mm and an average rainfall of 161.08 mm. The distance from Lintongnihuta Subdistrict to the regency capital is approximately 15 km, to the provincial capital is around 60 km, with travel times of 10 minutes and 5 hours, respectively. The nearest economic, health, and governmental facilities are accessible within 5-10 minutes.

#### 3.1.2 Land use

Most of the land in Lintongnihuta Subdistrict is designated for agricultural activities. Dry land covers the largest area at 15,190.17 hectares. The total area of rice fields is 1,992 hectares, with the largest in Tapan Nauli Village and the

smallest in Bonan Dolok Village. Due to its highland location, there are limitations on the types of fruit crops that can grow in the subdistrict. The predominant fruit is oranges, with production centers in Hutasoit II, Nagasaribu II, and Parulohan Villages.

### 3.1.3 Demographic conditions

The population of Lintongnihuta Subdistrict reaches 32,206 people, comprising 16,272 males and 15,934 females (BPS Humbang Hasundutan, 2020). The number of males exceeds females in the subdistrict, with a sex ratio of 102.12 percent in 2019. The population density in Lintongnihuta Subdistrict is 170.97 people per km<sup>2</sup>. Sibuntuon Parpea Village has the highest population density, accounting for 3.58 percent of the total geographic area of Lintongnihuta Subdistrict, with a population of approximately 2,559 people and a density of 405.68 people per km<sup>2</sup>. On the other hand, there are sparsely populated areas, constituting only 1.86 percent with a population density of 85.25 people per km<sup>2</sup>. The uneven distribution of the population remains a demographic characteristic of Lintongnihuta Subdistrict.

## 3.2 Research Findings

### 3.2.1 Level of women's participation in musrenbangdes in lintongnihuta subdistrict

Women's participation was measured using eight questions (indicators) on a Likert scale of 1-5. Therefore, the lowest score is 8 when respondents strongly disagree (rated 1) with all questions.

The research results indicate that Musrenbangdes in Lintongnihuta Subdistrict is not merely a ceremonial meeting but has indeed become a forum for women to express aspirations and urgent needs for the local community. All proposals brought to the Musrenbangdes forum are purely women's aspirations.

Furthermore, the research findings reveal that Musrenbangdes has also become a platform for the government to communicate all development activities, both implemented and planned. This supports the need for women's participation in Musrenbangdes, emphasizing that women's

**Table 1. Women's population in musrenbangdes in lintongnihuta subdistrict in 2023**

No	Village Name	Number of Female Participants
1	Tapian Nauli	33
2	Hutasoit 1	22
3	Sibuntuon Partur	16
4	Nagasaribu IV	16
5	Nagasaribu I	14
6	Pargaulan	14
7	Habeahan	13
8	Nagasaribu III	12
9	Sibuntuon Parpea	12
10	Sitio II	11
11	Parulohan	10
12	Nagasaribu V	10
13	Bonan Dolok	8
14	Nagasaribu II	8
15	Hutasoit 2	8
16	Lobutua	8
17	Dolokmargu	8
18	Sigompul	7
19	Sihar Julu	6
20	Siponjot	6
21	Sitolubahal	5
22	Sigumpar	4
Total		251

Source : BPS Humbang Hasundutan Regency, 2023

**Table 2. Measurement of women's participation level in musrenbangdes 2023**

No	Variable	Indicator	Role	Importance Score	Level
1	Manipulation	Government's manipulation	a.	Very High	5
			b.	High	4
			c.	Moderate	3
			d.	Low	2
			e.	Very Low	1
2	Therapy	To prevent community anger/socialization	a.	Very High	5
			b.	High	4
			c.	Moderate	3
			d.	Low	2
			e.	Very Low	1
3	Informing	One-way information sharing/socialization	a.	Very High	5
			b.	High	4
			c.	Moderate	3
			d.	Low	2
			e.	Very Low	1
4	Consultation	Community input, not always utilized	a.	Very High	5
			b.	High	4
			c.	Moderate	3
			d.	Low	2
			e.	Very Low	1
5	Placation	Community suggestions accepted but not always implemented	a.	Very High	5
			b.	High	4
			c.	Moderate	3
			d.	Low	2
			e.	Very Low	1
6	Partnership	Mutual negotiation	a.	Very High	5
			b.	High	4
			c.	Moderate	3
			d.	Low	2
			e.	Very Low	1
7	Delegated Power	Community given power (partially or entirely in programs)	a.	Very High	5
			b.	High	4
			c.	Moderate	3
			d.	Low	2
			e.	Very Low	1
8	Citizen control	Fully controlled by the community	a.	Very High	5
			b.	High	4
			c.	Moderate	3
			d.	Low	2
			e.	Very Low	1

participation can be a tool to obtain information about the conditions, needs, and attitudes of the local community. All proposals are accepted, but their feasibility is still assessed by the government for implementation. The government delegates the authority to design, implement, monitor, and evaluate village development activities, giving the community full responsibility.

However, despite the community being involved in the development planning process through

Musrenbangdes, not all decisions in the form of proposed activities can be fully approved by the district government for implementation. Decisions made in Musrenbangdes still go through the Musrenbang process at higher levels, namely at the subdistrict and district levels. In the perspective of public administration, the position of citizens is crucial as drivers of the dynamics of a democratic governance system, bringing fundamental values that place citizens as sovereign. The implication is that governance

must be built from the people, by the people, and for the people. In other words, governance must be built with democratic methods or values.

income level, and duration of residence) and external factors (including communication and leadership).

**3.2.2 Analysis of the relationship between factors influencing women's participation in musrenbangdes in lintongnihuta subdistrict**

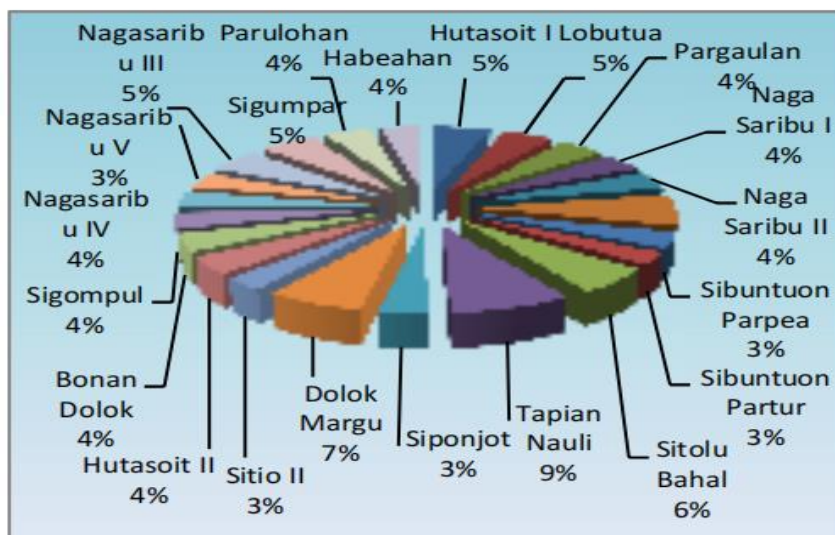
a. Age

Factors suspected of influencing women's participation in development planning are categorized into two: internal factors (including age, education level, occupation, population

Age is a factor that can influence women's involvement in Musrenbangdes activities. Women from middle to older age groups, with a stronger moral attachment to community values and norms, tend to participate more than those from other age groups.

**Table 3. Measurement of variables influencing women's participation level in musrenbangdes in lintongnihuta subdistrict, humbang hasundutan regency**

No	Variable	Criteria
1	Age	1. < 30 years 2. 30-40 years 3. 41-50 years 4. 51-60 years 5. > 60 years
2	Education	1. Elementary School (SD) 2. Junior High School (SMP) 3. Senior High School (SMU) 4. Diploma (D1-D3) 5. Bachelor's Degree (S1)
3	Occupation	1. Farmer 2. Entrepreneur 3. Teacher 4. Civil Servant (PNS) 5. Others
4	Income	1. < 1,000,000/month 2. 1,000,000-1,500,000/month 3. 1,500,001-2,000,000/month 4. 2,000,001-2,500,000/month 5. 2,500,001-3,000,000/month
5	Duration of Residence	1. < 5 years 2. 5-10 years 3. 11-15 years 4. 16-20 years 5. 21-25 years 6. > 25 years
6	Village Office Communication	1. Low communication level in the village 2. Moderate communication level in the village 3. High communication level in the village
7	Village Leader	1. Inactive Leader 2. Less Active Leader 3. Active Leader 4. Very Active Leader



**Fig. 1. Percentage of village area to the total area of lintongnihuta subdistrict**

**Table 4. Recapitulation of indicators of women's participation in musrenbangdes in lintongnihuta subdistrict**

Questions	STS		TS		RR		S		SS		Description	Des
	F	%	F	%	F	%	F	%	F	%		
No dialogue or consultation, everything has been determined by the government.	32	43%	38	51%	2	3%	1	1%	1	1%	Manipulasi	1,66
Everything has been determined by the government, and only a few activity plans are presented with no dialogue for response.	13	18%	46	62%	8	11%	6	8%	1	1%	Therapy	2,14
Everything has been determined by the government, and all activity plans are presented, but there is still no dialogue for response.	23	31%	43	58%	0	0%	8	11%	0	0%	Informing	1,91
Women are allowed to provide proposals, although they are not guaranteed to be accepted.	3	4%	17	23%	1	1%	35	47%	18	24%	Consultation	3,65
All proposals are accepted, but their feasibility is still assessed by the government for implementation.	1	1%	10	14%	2	3%	40	54%	21	28%	Placation	3,95
Women and the government collaboratively design and implement activities in village development.	1	1%	12	16%	3	4%	36	49%	22	30%	Partnership	3,89
The government delegates authority in designing, implementing, monitoring, and evaluating village development activities, with the community given full responsibility.	2	3%	13	18%	11	15%	34	46%	14	19%	Delegation Power	3,61
The community fully manages various activities for its own interests, agreed upon together. The role of the community is greater than the role of the government.	4	5%	22	30%	10	14%	36	49%	2	3%	Citizen Control	3,14

If the significance value is smaller than the pre-defined alpha level (0.05), it can be concluded that there is a significant relationship between the two variables. In Table 5 above, the alpha value is  $0.033 < (\alpha = 0.05)$ , indicating a significant relationship between the two variables, namely age and women's participation.

According to Fig. 2, respondents in the age group of 30-40 years show a relatively higher level of participation in Musrenbangdes activities in the Lintongnihuta Subdistrict compared to all other age groups. This suggests that adults in this age range have a desire and moral attachment to their living environment, enabling them to identify the development needs of women and the village/urban area where they reside. Consequently, they are more willing to participate in Musrenbangdes activities.

b. Education

Based on the chi-square test results shown in Table 6, there is a relationship between women's participation and education. This indicates differences in women's participation in Musrenbangdes activities in the Lintongnihuta Subdistrict based on their education level. The differences can be observed in the table below.

In Table 6 above, the alpha value is  $0.032 < (\alpha = 0.05)$ , indicating a significant relationship

between the two variables, namely education and women's participation. Fig. 3 presents the tabulation results of the relationship between education and women's participation.

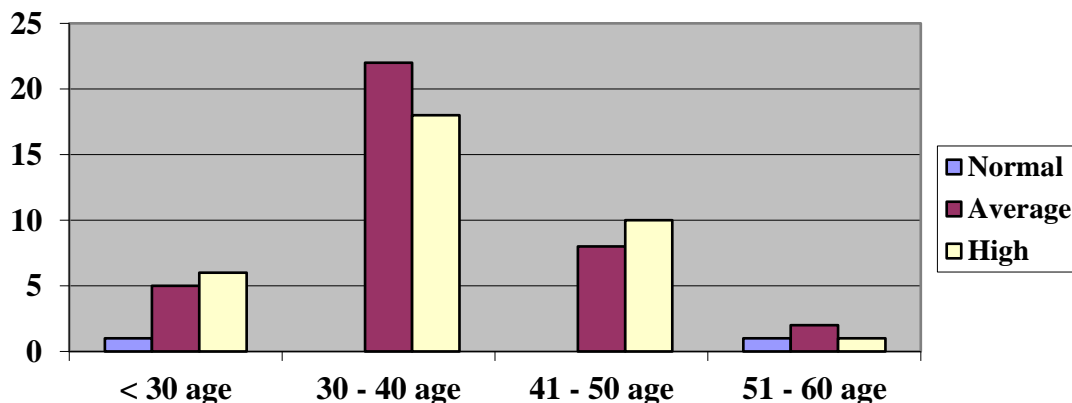
According to Fig. 3, respondents with a high school education background (SMA) show relatively higher levels of participation compared to those with a Bachelor's or Master's degree (S1/S2). The higher participation of this group is attributed to the fact that individuals with S1/S2 education backgrounds often have jobs outside the development area and are generally busy with their respective activities, making it rare for them to participate in development activities in the village. This reflects that women in the Lintongnihuta Subdistrict have a relatively low level of education. This educational level provides an opportunity to advocate for the improvement of informal skills for women in the village through specific counseling or socialization activities for women in Musrenbangdes.

c. Occupation

The chi-square test results shown in Table 7 suggest that there is a relationship between women's participation and occupation. This indicates differences in women's participation in Musrenbangdes activities based on their occupations.

**Table 5. Chi-square results for age & women's participation in musrenbangdes**

	Value	Df	Asymptotic Significance (2-sided)
Pearson Chi-Square	13.757 <sup>a</sup>	6	.033
Likelihood Ratio	9.479	6	.148
Linear-by-Linear Association	1.721	1	.190
N of Valid Cases	72		



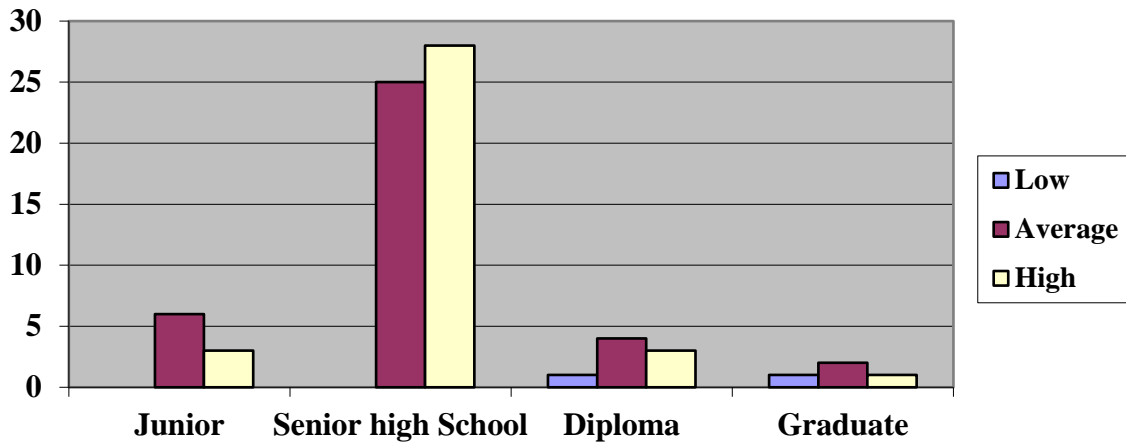
**Fig. 2. Relationship between age and women's participation**



**Table 6. Chi-square results for education & women's participation in musrenbangdes**

	Value	Df	Asymptotic Significance (2-sided)
Pearson Chi-Square	13.757 <sup>a</sup>	6	.032
Likelihood Ratio	9.479	6	.148
Linear-by-Linear Association	1.721	1	.190
N of Valid Cases	72		

a. 10 cells (83.3%) have expected count less than 5. The minimum expected count is .11



**Fig. 3. Relationship between education and women's participation**

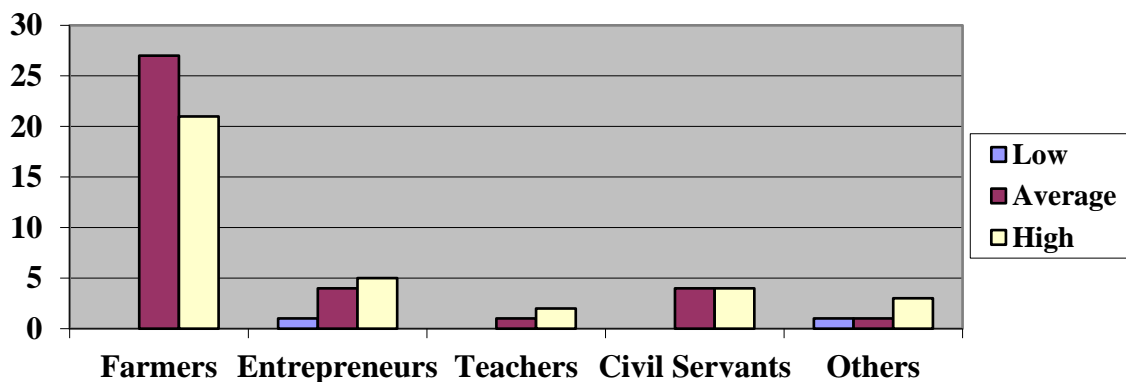
**Table 7. Chi-Square results for occupation & women's participation in musrenbangdes lintongnihuta subdistrict**

	Value	Df	Asymptotic Significance (2-sided)
Pearson Chi-Square	11.306 <sup>a</sup>	8	.185
Likelihood Ratio	9.077	8	.336
Linear-by-Linear Association	.040	1	.841
N of Valid Cases	72		

a. 12 cells (80.0%) have expected count less than 5. The minimum expected count is .08.

In Table 7 above, the alpha value is  $0.185 > (\alpha = 0.05)$ , indicating no significant relationship between the two variables, namely occupation

and women's participation. Fig. 4 presents the tabulation results of the relationship between occupation and women's participation.



**Fig. 4. Relationship between occupation and women's participation**

According to Fig. 4, respondents with various occupations, including farmers, civil servants, entrepreneurs, teachers, and others, show different levels of participation. The group of farmers tends to have higher participation in Musrenbangdes activities because most farmer participants have more free time and a better understanding of the needs of their living environment.

d. income

To participate in an activity, it must be supported by a sufficiently stable or prosperous economy, including income. Below is the research data on the role of women in Musrenbangdes in the Lintongnihuta Subdistrict based on the respondents' income.

In Table 8 above, the alpha value is  $0.843 > (\alpha = 0.05)$ , indicating no significant relationship between the two variables, namely income and women's participation. Fig. 5 presents the tabulation results of the relationship between income and women's participation.

According to Fig. 5, respondents with an income of IDR 1,000,000-1,500,000 are more actively participating in Musrenbangdes. Most active participants in Musrenbangdes are mothers who are farmers because they have more free time

compared to those with other professions. Women can participate according to their field of work and can address issues faced in their living environment based on their type of work. For example, a farmer participating in addressing agricultural improvement issues, such as improving information on cultivation and marketing of village/city harvests, and similarly, a woman with an entrepreneurial job will raise issues related to improving the skills of women in her village.

e. length of Residence

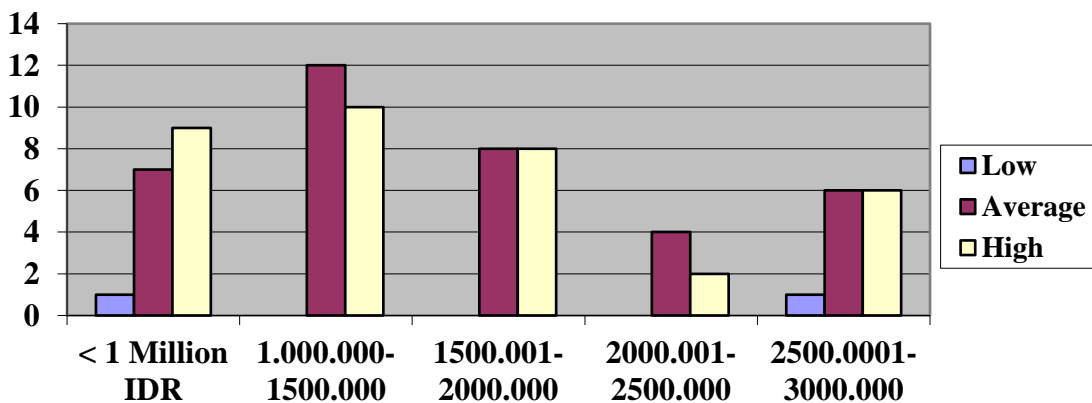
The longer someone lives in a particular environment, the greater their sense of ownership towards the environment tends to be reflected in their significant participation in every activity in that environment. Based on the research data on the role of women in Musrenbangdes in the Lintongnihuta Subdistrict seen from the length of residence of respondents in that environment is shown in Table 9.

In Table 9 above, the alpha value is  $0.070 > (\alpha = 0.05)$ , indicating no significant relationship between the two variables, namely length of residence and women's participation. Fig. 6 presents the tabulation results of the relationship between length of residence and women's participation.

**Table 8. Chi-square results for income & women's participation in musrenbangdes**

	Value	Df	Asymptotic Significance (2-sided)
Pearson Chi-Square	4.156 <sup>a</sup>	8	.843
Likelihood Ratio	4.789	8	.780
Linear-by-Linear Association	.254	1	.614
N of Valid Cases	72		

a. 7 cells (46.7%) have expected count less than 5. The minimum expected count is .16.

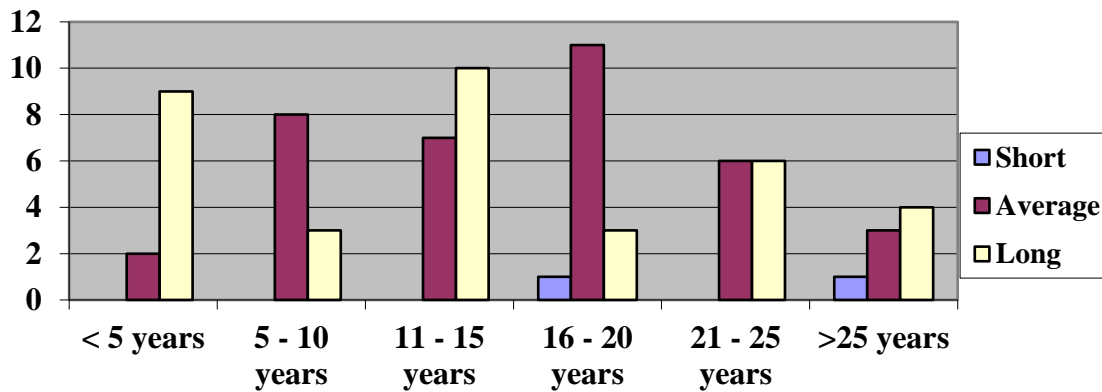


**Fig. 5. Relationship between income and women's participation**

**Table 9. Chi-square results for length of residence & women's participation in musrenbangdes**

	Value	Df	Asymptotic Significance (2-sided)
Pearson Chi-Square	17.179 <sup>a</sup>	10	.070
Likelihood Ratio	17.669	10	.061
Linear-by-Linear Association	2.385	1	.123
N of Valid Cases	72		

a. 8 cells (44.4%) have expected count less than 5. The minimum expected count is .22.



**Fig. 6. Length of residence and women's participation**

According to Fig. 6, it can be seen that out of 72 respondents who have given their responses, they have lived/resided in the Lintongnihuta Subdistrict for quite a long time, with the highest being women who have lived or resided for 16 to 20 years in the Lintongnihuta Subdistrict. This indicates that women who actively participate in Musrenbangdes activities are women who have lived in the Lintongnihuta Subdistrict for a period of 16-20 years, so they should know what women need in the area where they live.

f. Village Leader

The research results in the Lintongnihuta Subdistrict show that there are differences in women's participation in Musrenbangdes based on the village leader. These differences can be seen in Table 10.

In Table 10 above, the alpha value is  $0.000 < (\alpha = 0.05)$ , indicating a significant relationship between the two variables, namely the village leader and women's participation. Fig. 7 presents the tabulation results of the relationship between the village leader and women's participation.

In Fig. 7, there is a tendency that the higher the level of leadership activity of the village leader, the higher the level of women's participation in

Musrenbangdes activities. The leadership level in the villages in the Lintongnihuta Subdistrict is considered by respondents to be capable enough to recognize and capture the needs required for subordinates and women in their villages and can accommodate these aspirations into proposed activities decided in Musrenbangdes. This will undoubtedly bring positive impacts for the community because they will voluntarily engage in an activity if there is a positive and beneficial response.

**4.3 Internal and External Factors**

The table below provides a summary of the chi-square test results for internal and external factors influencing women's participation in development planning. These factors are categorized into two groups: internal factors (including age, education level, occupation, income level, and length of residence) and external factors (including communication and village leadership).

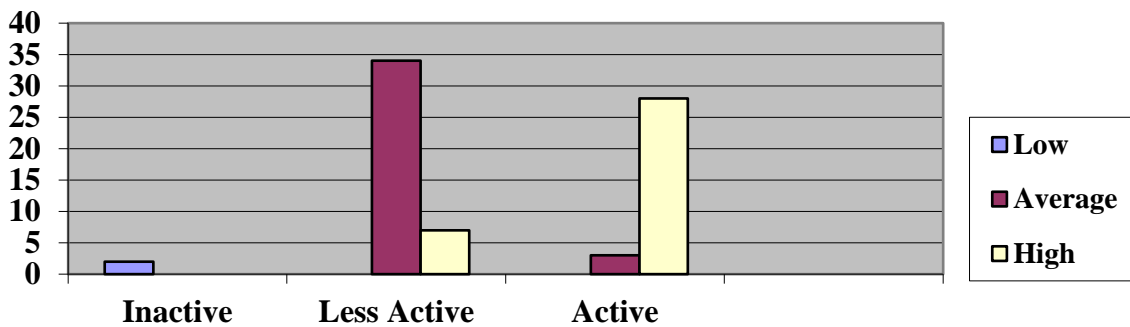
Based on the chi-square test results for the five internal factors and two external factors believed to be related to women's participation in village development planning through Musrenbangdes, it turns out that only age, education level, communication level, and village leadership

significantly influence women's participation in Musrenbangdes. On the other hand, occupation, income, and length of residence in the village do not significantly affect women's participation in Musrenbangdes.

**Table 10. Chi-square results for village leader & women's participation in musrenbangdes**

	Value	Df	Asymptotic Significance (2-sided)
Pearson Chi-Square	126.759 <sup>a</sup>	4	.000
Likelihood Ratio	83.393	4	.000
Linear-by-Linear Association	55.681	1	.000
N of Valid Cases	72		

a. 5 cells (55.6%) have expected count less than 5. The minimum expected count is .05.

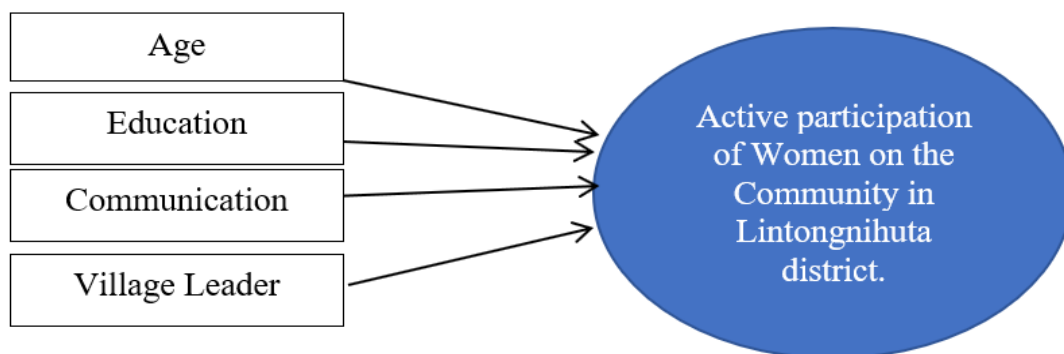


**Fig. 7. Village leader and women's participation**

**Table 11. Summary of chi-square test results for internal and external factors**

Internal & External Factors	Pearson Square	Chi-Square	Asymptotic Significance (2-Sided)	Contingency Coefficient
Age	11.554		0.033	0.238
Education	13.757		0.032	0.148
Occupation	11.306		0.185	0.336
Income Level	4.156		0.843	0.780
Length of Residence	17.719		0.700	0.061
Communication	12.759		0.00	0.00
Village Leadership	12.969		0.00	0.00

Source: Processed primary data, 2023



**Fig. 8. Relationship between internal and external factors and the active participation of the community in musrenbangdes**

## 5. CONCLUSION AND RECOMMENDATION

The level of women's participation in the Village Development Planning Deliberation (Musrenbangdes) in Lintongnihuta District has reached the fifth degree, namely Placation, with a score of 3.95. This indicates that suggestions from the community are accepted but not always implemented. Factors such as age, education level, communication from the village office to the community, and the role of the village leader are significantly related to women's participation in Musrenbangdes. However, factors such as job type, income, and length of residence in the village do not significantly affect women's participation in Musrenbangdes.

The government is advised to optimize women's participation by considering their specific needs. This involves the development of facilities and infrastructure for training activities, childcare facilities for working women, and health education activities. The community, especially women, is encouraged to motivate themselves and actively take responsibility for village development. Significant factors need to be maximized, while non-significant factors need to be minimized to enhance participation. Additionally, it is recommended to establish women's organizations or institutions in the village as a platform to empower and organize women. This can help convey women's aspirations and ideas for the benefit of village development in both the short and long term.

### CONSENT AND ETHICAL APPROVAL

Ethical considerations were prioritized, adhering to guidelines to guarantee participant privacy and obtain informed consent.

In conclusion, this comprehensive methodology provides a robust framework for understanding and analyzing women's participation in Musrenbangdes, incorporating both internal and external factors.

### COMPETING INTERESTS

Authors have declared that no competing interests exist.

## REFERENCES

1. Lusiarista, Arif M. The Role of Women in Economic Growth in the Pati Residency Period 2015-2020. *Social Science Studies*. 2022;2(3):197-214.
2. Giyono U, Maemunah. Women in the Human Development Index (Study of IPM-IPG and IDG Sources of the Ministry of National Development Planning for 2019). *Jurnal Jendela Hukum*. 2021;8(2):75-86.
3. Kristina A, Iskandar D. Political Participation and Representation of Women in Parliament. *Wacana: Journal of Interdisciplinary Social and Political Sciences*. 2022;09(01).
4. Saputra WA, Yuanto. The Role of Women Members of the Regional People's Representative Council in Carrying Out Budget Functions (Study on the Process of Formulating Regional Budgets in Musi Rawas Regency Period 2014-2019). *Journal of Government Science Suara Khatulistiwa (JIPSK)*, IV(2); 2019.
5. Roito FV, Zebua LP. The Role of Women Members of the Village Consultative Body in Advocating Women's Aspirations in 2020 (Comparative Study of Sindanglaya-Lebak Village and Hiliweto Nias Village). *Journal Inada*. 2020;03(2).
6. Prawira INAJ, Bandiyah, Azhar MA. Political Representation of Women Members in the Village Consultative Body Sanur Kauh Period 2013-2019. *Nawala Politika*. 2021;1(2).
7. Darwin MM. State and Women: Public Policy Reorientation. Faculty of Social and Political Sciences, Gadjah Mada University; 2005.
8. Umar H. Research Methods for Business Theses and Dissertations. Jakarta: PT Raja Grafindo Persada; 2013.
9. Arikunto. Research Procedures: A Practical Approach. Jakarta: PT. Rineka Cipta; 2006.
10. Central Bureau of Statistics. Humbang Hasundutan Regency in Figures; 2023.
11. Diprose R. Brokerage, Power and Gender Equity: How Empowerment-Focused Civil Society Organizations Bolster Women's Influence in Rural Indonesia. *Journal of International Development*. 2023;35(401-425).

12. Syukri M. Gender Policies of the New Developmental State: The Case of Indonesian New Participatory Village Governance. *Journal of Current Southeast Asian Affairs*. 2023;42(1):110–133.

---

© 2024 Situmorang et al.; This is an Open Access article distributed under the terms of the Creative Commons Attribution License (<http://creativecommons.org/licenses/by/4.0>), which permits unrestricted use, distribution, and reproduction in any medium, provided the original work is properly cited.

*Peer-review history:*  
*The peer review history for this paper can be accessed here:*  
<https://www.sdiarticle5.com/review-history/111454>