

# The Relation between Glutathione S Transferase (GSTM1, GSTP1 and GSTT1) Polymorphisms and Clinical Diversity of Sickle Cell Disease among Pediatric Sudanese Patients

Naif Taleb Ali<sup>1\*</sup>, Ozaz Yagoup Mohammed Ahmed<sup>1</sup>, Fayad Osman Mohammed<sup>2</sup> and Huda Mohammed Haroun<sup>1</sup>

<sup>1</sup>Department of Hematology and Immunohematology, Faculty of Medical Laboratory Sciences, Gezira University, Sudan.

<sup>2</sup>Institute of Endemic Diseases, University of Khartoum, Khartoum, 11111, Sudan.

## Authors' contributions

This work was carried out in collaboration among all authors. Author NTA designed the study, collect the data, carried out the analysis, performed the statistical analysis, wrote the protocol and wrote the first draft of the manuscript. Authors OYMA and HMH supervised and help in the work and give the information for all sections in Research. Author FOM helped in Molecular analysis. All authors read and approved the final manuscript.

## Article Information

### Editor(s):

(1) Dr. Dharmesh Chandra Sharma, G. R. Medical College & J. A. Hospital, India.

### Reviewers:

(1) Alice Verticchio, Icahn School of Medicine at Mount Sinai, USA.

(2) Luis Silva Santos, Universidade Católica Portuguesa, Portugal.

Complete Peer review History: <http://www.sdiarticle4.com/review-history/66916>

Original Research Article

Received 20 January 2021

Accepted 25 March 2021

Published 14 April 2021

## ABSTRACT

**Background:** Sickle cell disease (SCD) is a highly variable condition, with some patients being asymptomatic and others frequently admitted to hospital. Impairment of the glutathione system due to genetic polymorphisms of glutathione S-transferase (GST) genes is expected to influence on the severity of SCD manifestations.

**Objectives:** This study aimed to investigate the possible association between the presence of GSTM1, GSTT1 and GSTP1 gene polymorphisms and SCD severity, diversity and complications.

**Study Design:** Cross-section hospital based study.

**Place and Duration of Study:** This study carried out in Khartoum town in Jafar Ibn Auf Pediatric Hospital / Khartoum during the period (June 2017 to June 2020).

\*Corresponding author: E-mail: [naiftalebali@gmail.com](mailto:naiftalebali@gmail.com);

**Methodology:** The total subjects of the confirmed diagnosis were 126 patients, 78 (61.9%) are males and 48 (38.1%) are female.

GSTM1 and GSTT1 genotypes were determined by polymerase chain reaction (PCR), GSTP1 genotyping was conducted with a PCR-RFLP, and the data analyzed by SPSS version 23.

**Results:** The GSTM1null genotype was found to be present in male more than female (OR=2.6 and  $p=0.002$ ) and trend to be protective from development of Dactylitis (OR=0.313 and  $p=0.006$ ) and reduce risk to develop ACS (OR=0.23 and  $p=0.002$ ) while this polymorphism increase requirement for blood exchange (OR=1.1 and  $p=0.044$ ), the GSTT1null genotype found to be present in female more than male (OR=2.6 and  $p=0.012$ ) and this polymorphism reduce requirements for blood transfusion (OR=0.137 and  $p<0.001$ ) and annual hospitalization (OR=0.436 and  $p=0.029$ ), and reduce risk to development of stroke (OR=0.125 and  $p=0.008$ ), polymorphism of both GSTM1 and GSTT1 found to be associated with appearance of disease before one year of age (OR=1.43 and  $p=0.004$ ) and trend to be protective from development of Dactylitis (OR=0.124 and  $p=0.002$ ), and there are no statistically significance association between GSTP1 gene polymorphism and gender variability and clinical manifestations of SCD.

**Conclusion:** Some GST genes polymorphisms were significantly associated with increased risk and some trend to have protective effect on clinical manifestations of SCD.

*Keywords: SCD; GST; GSTM1; GSTT1; GSTP1; polymorphisms; ACS; Sudan.*

## 1. INTRODUCTION

Sickle cell diseases (SCD) is a disorder caused by a mutation that results in a single substitution of amino acid valine for glutamic acid in the sixth position on the beta subunit of hemoglobin resulting in abnormal hemoglobin, hemoglobin (Hb) S [1]. In its deoxygenated state, the HbS molecules become polymerized and deform the red blood cells, causing oxidative damage, cellular dehydration, abnormal phospholipid asymmetry, and increased adhesion to vascular endothelium [2]. The multifactorial nature of the SCD involves several changes in erythrocyte sickling, vaso-occlusive episodes, hemolysis, activation of inflammatory mediators, oxidative stress and endothelial dysfunction, which apparently result from HbS instability, generating oxygen radicals [3]. Among the major complications of SCD, stroke, acute chest syndrome, infections, osteoarticular lesions, lower limbs ulcers and priapism are among the most common [4,5]. An altered glutathione (GSH) metabolism in association with increased oxidative stress has been implicated in the pathogenesis of many diseases [6]. Alterations in GSH concentration have been demonstrated in many pathological conditions including SCD [7]. Glutathione S-transferases (GST) are a family of enzymes involved in phase-II detoxification of endogenous and xenobiotic compounds. Polymorphisms in GST genes have been associated with susceptibility to different diseases [8]. The clinical severity and hematological manifestations of sickle cell anemia are varied and are influenced by the

participation of several genes in modulating the phenotype of sickle cell disease; polymorphisms of these genes may be related to the different manifestations between individuals [9].

The study of GSTM1, GSTT1 and GSTP1 gene polymorphisms in Sickle cell disease patients are the first step toward the understanding of the pathophysiology of disease, enabling predictive medicines and providing clinically useful pharmacogenomics, so this study was aimed to investigate the possible association between the presence of GSTM1, GSTT1 and GSTP1 genes polymorphism and SCD severity, diversity and complications.

## 2. MATERIALS AND METHODS

This study is cross-section hospital based study; included 126 pediatric patients with sickle cell disease who were confirmed by hemoglobin electrophoresis, Sickling test and clinical examination. Patients were invited to participate in the study during their regular follow up visits to Jafar Ibn Auf Pediatric Hospital / Khartoum. The study protocol was in accordance with the local hospital research guidelines and informed consent was obtained from patient's legal representatives. The data and blood samples collection were carried out in Khartoum town in Jafar Ibn Auf Pediatric Hospital / Khartoum.

The DNA extraction and storage and molecular biology analysis were carried out in the department of Molecular biology Institute of

Endemic Diseases (IEND) –University of Khartoum.

Clinical data were obtained from medical records and interviews with the patients.

## 2.1 Molecular Analysis

5 ml of blood were obtained from all participants, collected in sterile EDTA tubes, and then stored at -20°C until use.

DNA was extracted from EDTA blood samples by G-spin TM Total DNA extraction kit protocol intron biotechnology: briefly, a total of 200 µl of blood sample was placed in 1.5ml micro centrifuge tube, 20 µl proteinase K and 5 µl of RNase solution were added. The solution was mixed gently by vortex, and then 200 µl of Buffer BL was added into sample and mixed thoroughly and placed at Room temperature for 2 minutes. The lysate was incubated at 56 C for 10 min and briefly centrifuged to remove drops from the inside of the lid. Thereafter, 200 µl of absolute ethanol was added into the lysate and mixed gently by inverting 5-6 times or pipetting. The mixture was applied to the spin column (in a 2 ml collection tube) and centrifuged at 13,000 rpm for 1 min. The filtrate was discarded and the spin column was placed in a new 2ml collection tube then 700 µl of buffer WA was added to the spin column, and centrifuged for 1 min at 13,000 rpm. The flow-through was discarded and 700 µl of buffer WB was added and centrifuged for 1 min at 13,000 rpm. The flow-through was discarded and the column was placed into a new 2 ml collection tube, then again centrifuged for 1min to dry the membrane. Finally, the spin column was placed into a new 1.5 ml tube, and 40 µl of buffer CE was directly added onto the membrane, and incubated for 1 min at room temperature, DNA was then eluted by centrifugation for 1 min at 13,000 rpm. DNA purity was quantified using a Nano Drop Spectro-photometer (Thermo Scientific 2000) and the DNA integrity was checked using agarose gel electrophoresis.

## 2.2 Genotyping of GSTM1 and GSTT1 Polymorphisms

The primers were synthesized by Sangon and PCR amplifications were carried out using the thermal cycler Applied QIAGEN (Rotor-Gene Q).

For GSTM1 genotype, the following pair of primers was used in the genotyping analysis: Forward primer:

GAAGTCCCTGAAAAGCTAAAGC-3, Reverse primer: 5- GTTGGGCTCAAATATACGGTGG -3. PCR was carried out in a total volume of 20 µl. It consists of 2 µl of genomic DNA, 1 µl from each primer, Master mix (Maxime TM premix kit (i-Taq) and 16 µl distilled water. PCR was initiated by denaturation step at 95°C for 2 minutes followed by 35 cycles of denaturation at 95°C for 30 seconds, annealing temperatures ranged between 59°C for 30 second and 72°C for 30 second, and final extension at 72°C for 5 minutes.

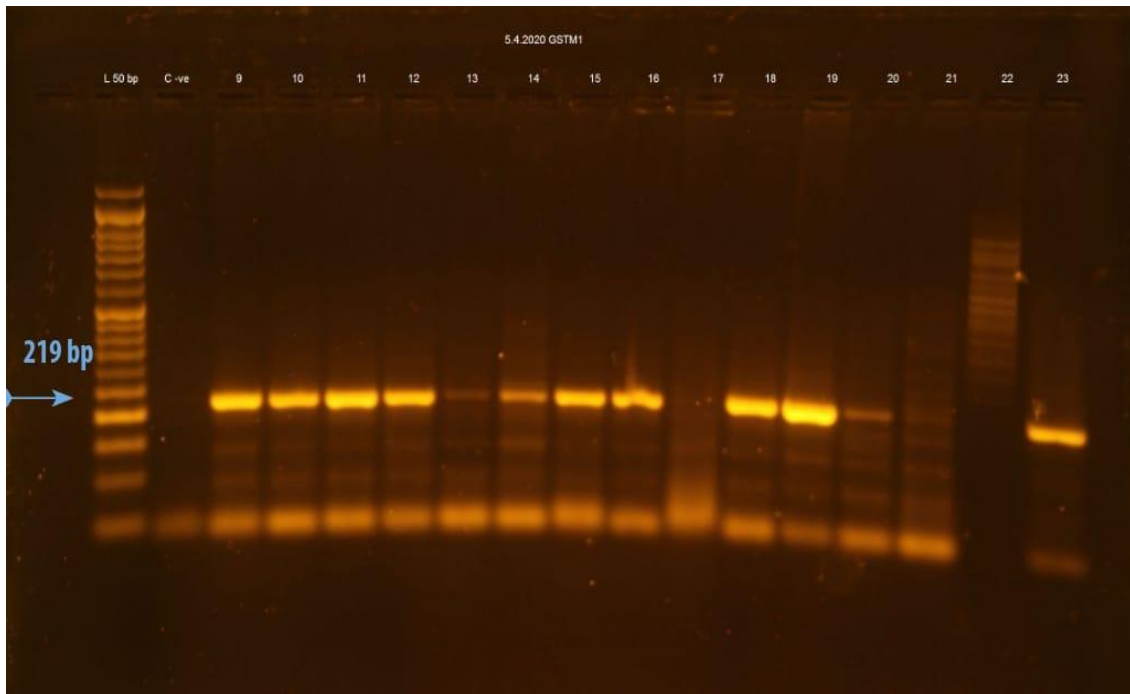
For GSTT1 genotype, the following pair of primers was used in the genotyping analysis: Forward primer: TTCCTTACTGGTCCTCACATCTC -3, Reverse primer: 5- TCACCGGATCATGGCCAGCA -3. PCR was carried out in a total volume of 20 µl. It consists of 2 µl of genomic DNA, 1 µl from each primer, Master mix (Maxime TM premix kit (i-Taq) and 16 µl distilled water. PCR was initiated by denaturation step at 95°C for 2 minutes followed by 30 cycles of denaturation at 95°C for 30 seconds, annealing temperatures ranged between 60°C for 30 second and 72°C for 50 second, and final extension at 72°C for 5 minutes. The product obtained from each reaction was subjected to electrophoresis on a 2% agarose gel in an electric field of 10 V/cm, stained with 5 µg/mL ethidium bromide, and visualized and recorded with the aid of a video documentation system (Image Master VDS®, Amersham Pharmacia Biotech). GSTM1 and GSTT1 genotypes were determined by the presence and absence (null) of bands of 219 and 480 bp respectively (Figs. 1 and 2).

## 2.3 For Genotyping of GSTP1 Polymorphism

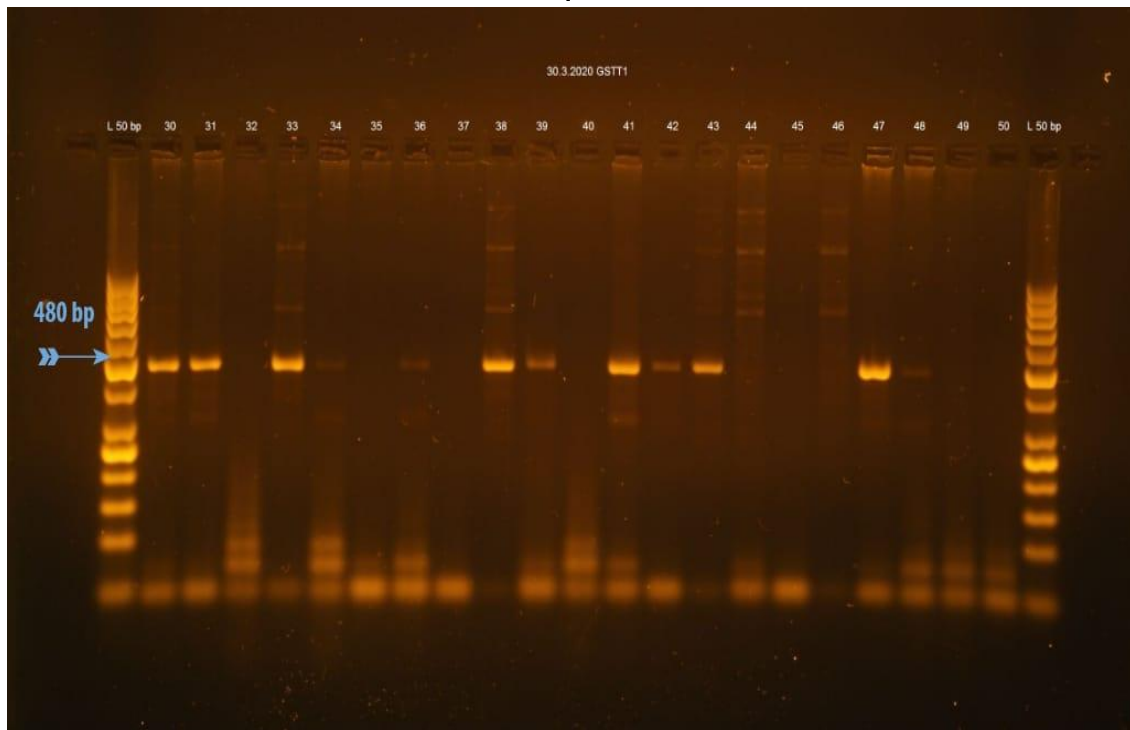
GSTP1 (Ile105Val) polymorphism was determined with a polymerase chain reaction-restriction fragment length polymorphism assay [PCR-RFLP]. The PCR primers were: 5'-ACCCAGGGCTCTATGGGAA-3' (F) and 5'-TGAGGGCACAAGAAGCCCCT -3' (R).

PCR was carried out in a total volume of 20µl. It consists 2µl genomic DNA, 1µl each primer, ready to load master mix (Maxime TM premix kit (i-Taq) and 16µl distilled water. PCR condition includes initial denaturation at 95°C for 2 minutes, followed by 30 cycles at 95°C for 30 second, 61.3°C for 30 second, 72°C for 20 second and a last extension at 72°C for 5 minutes. PCR products were analyzed on a 2%

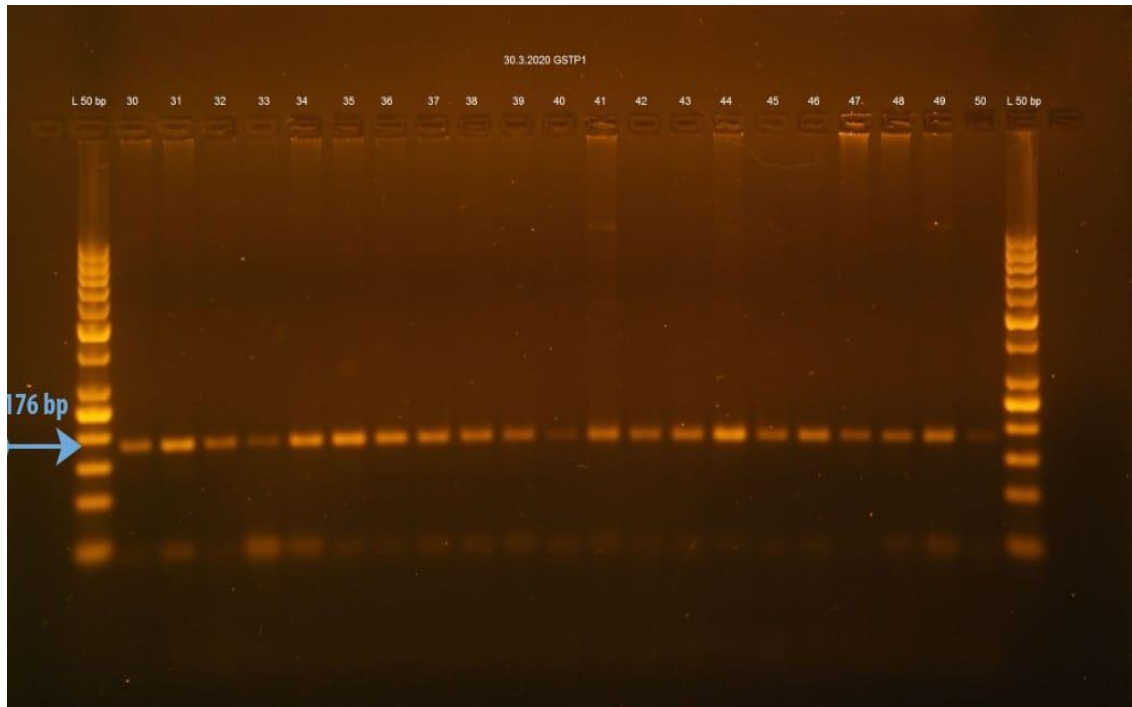
Agarose gel stained with 0.3 µg/mL ethidium bromide, and visualized by gel documentation system (to check the presence of 176 pb of GSTP1) (Fig. 3).



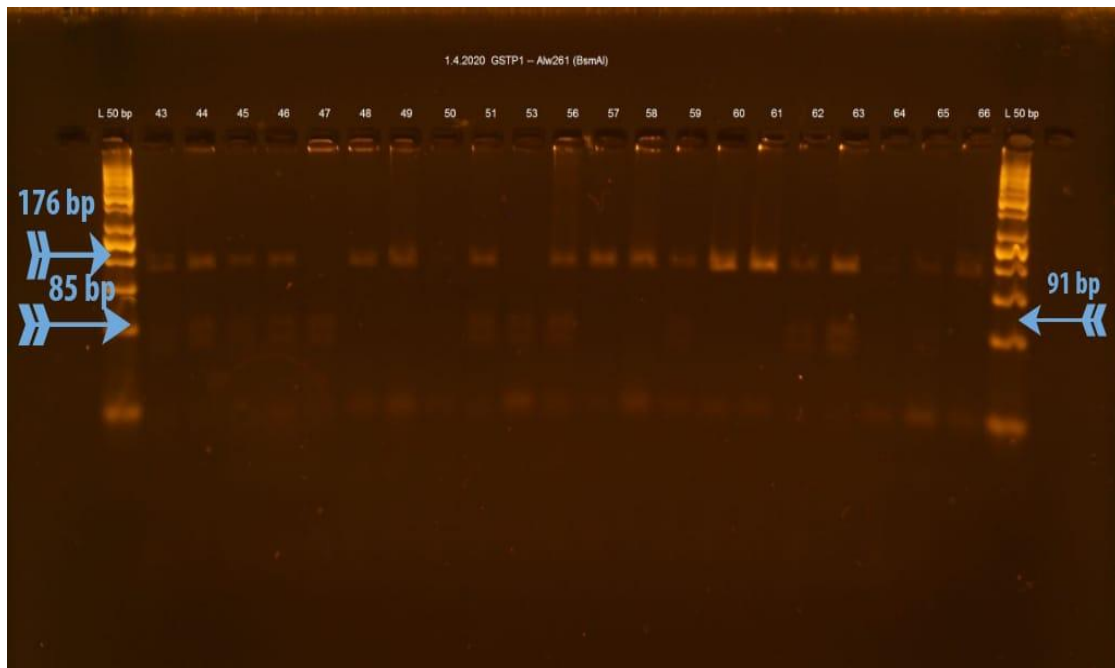
**Fig. 1. Agarose gel electrophoresis for amplified PCR products of GSTM1 (219bp) fragments**



**Fig. 2. Agarose gel electrophoresis for amplified PCR products of GSTT1 (480 bp) fragments**



**Fig. 3. Agarose gel electrophoresis for amplified PCR products of GSTP1 (176 bp) fragments**



**Fig. 4. DNA fragment digestion with Alw261 restriction enzyme**

Then the PCR product was digested with the restriction endonuclease Alw261 (BsmAI) restriction enzyme {thermoscientific Alw261 (BsmA1) Lot Number 00743699} as follow: For each 7  $\mu$ l of PCR product, 1  $\mu$ l from 10X NEB buffer and 0.5  $\mu$ l from Alw261 restriction enzyme were added, then incubated at 37°C for 20 hrs, followed by incubation at 65°C for 20 minutes to

inhibit the enzyme activity. The products are then resolved on 2% agarose gel electrophoresis containing ethidium bromide, then visualized using UV trans illuminator. The amplified fragment after digestion with Alw261 restriction enzyme, will give rise to: 2 fragments at 176 bp and 85 bp indicating the presence of wild type (Ile/Ile), appearance of 2 fragments at 91 bp and 85bp indicates the presence of homozygous mutant type (Val/Val), while presence of 3 fragments at 176 bp, 91 bp and 85 bp indicates the presence of heterozygous mutant type (Ile/Val). For quality control, genotyping of the samples were repeated blindly and were identical to the initial results (Fig. 4).

Lane DNA ladder: MW 100-1500 bp fragments, lane fragments at 176 bp and 85 bp indicates the presence of wild type (Ile/Ile), lane fragments at 176 bp, 91 bp and 85 bp indicates the presence of heterozygous mutant type (Ile/Val). Lane fragments at 91 bp and 85 bp indicates the presence of homozygous mutant type (Val/Val).

## 2.4 Statistical Analysis

Data were transferred to the Statistical Package for the Social Sciences (SPSS) Software program, version 23 to be statistically analyzed. The obtained data are presented as frequencies, percentage, mean and standard deviation, Descriptive and analytic statistics and crosstabulation were performed, Data were summarized using Chi-square or Fisher exact probability tests. Associations between the GSTM1, GSTT1 and GSTP1 polymorphisms and clinical manifestations of SCD patients were estimated using odd ratio (OR) and 95% confidence intervals (95% CIs). Odd ratio and confidence interval were used to estimate risk of the SCD among the population; the lowest accepted level of significance was 0.05 or less.

## 3. RESULTS

The total subjects of the confirmed diagnosis were 126 patients, 78 (61.9%) are males and 48 (38.1%) are female, the mean age of the study subjects was (8.0) years old; the minimum age was 10 months and the maximum one was 14.5 years.

In the study subjects, 94 (74.6%) were diagnosed with SCD when they were less than one year and 32 (25.4%) were diagnosed when their age one year or more, the frequency of blood transfusion for these patients 82 (65.1%)

were diagnosed with SCD had blood transfusion less than two times per year and 44 (34.9%) had blood transfusion more than two times per year, for the frequency of VOC 50 (39.7 %) were diagnosed with SCD had crises less than two times per year and 76 (60.3%) had VOC more than two times per year. Regarding the frequency of annual hospitalization 46 (36.5%) were diagnosed with SCD had less than two times per year and 80 (63.5%) had more than two times per year.

And out of whole subjects 14 (11.1%) were diagnosed with SCD had stroke and 52 (41.3%) had Dactylities, the frequency of ACS 78 (61.9%) were diagnosed with SCD had less than two times per year and 48 (38.1%) had more than two times per year.

And out of whole subjects 8 (6.3%) were diagnosed with SCD had bones problems and 4 (3.2%) had splenomegaly and 2 (1.6%) had blood exchange.

The GSTM1null genotype was found to be present in male more than female (OR=2.6, 95% CI=1.324 – 5.168, p=0.002) and trend to be protective from development of Dactylitis (OR=0.313, 95% CI=0.136 – 0.716, p=0.006) and reduce risk to develop ACS (OR=0.259, 95% CI=0.107 – 0.625, p=0.002) while this polymorphism increased requirements to blood exchange (OR=1.050, 95% CI=0.981 – 1.123, p=0.044).

Also we found, GSTM1null genotype increased risk to stroke but this association not statistically significant (OR=3.33, 95% CI=0.710 – 15.643, p=0.109), and there are no significant association between GSTM1 genotype and time of anemia appearance, frequency of blood transfusion, annual hospitalization, VOC, bone problems and splenomegaly (Table 1).

The GSTT1null genotype found to be present in female more than male (OR=2.6, 95% CI=1.224 – 5.472, p=0.012) and this polymorphism may reduce requirements to blood transfusion (OR=0.137, 95% CI=0.059 – 0.318, p< 0.001) and annual hospitalization (OR=0.436, 95% CI=0.206 – 0.924 p=0.029) and reduce risk to development of stroke (OR=0.125, 95% CI=0.0267 – 0.585, p=0.008).Also this study found GSTT1null genotype increased frequency of VOC, ACS, bone problems and splenomegaly but this association not statistically significant (OR=1.34, 95% CI=0.654 – 2.738, p=0.424) ,

(OR=1.47, 95% CI=0.713 – 3.044, p=0.294) , (OR=2.9, 95% CI=0.562 – 14.96, p=0.203) and (OR=1.1, 95% CI=0.151 – 8.088, p=0.923) respectively. And there are no significant association between GSTT1 null genotype and time of anemia appearance and Dactylities (Table 2).

Polymorphism of both GSTM1 and GSTT1 found to be associated with appearance of disease before one year of age (OR=1.43, 95% CI=1.264

– 1.623, p=0.004) and trend to be protective from development of Dactylitis (OR=0.124, 95% CI=0.027 – 0.563, p=0.002).

Also, there are no significance association between GSTM1/ GSTT1null genotype and gender, frequency of blood transfusion, hospitalization, VOC, stroke, ACS, bone problems, splenomegaly and blood exchange (Table 3).

**Table 1. Association between GSTM1 null genotype and clinical manifestations**

Clinical manifestations	GSTM1					
	Present	Null	Chi-square	Odd ratio	Confidence interval	95% p. value
<b>Gender</b>						
Male	44	34	9.692	2.6	(1.324 – 5.168)	0.002
Female	40	8				
<b>Anemia appearance</b>						
< 1 year	62	32	0.084	0.881	0.372 – 2.083	0.772
≥ 1 year	22	10				
<b>Blood transfusion</b>						
< 2 per year	54	28	0.070	0.900	0.412 – 1.966	0.792
≥ 2 per year	30	14				
<b>VOC</b>						
< 2 per year	32	18	0.265	0.821	0.386 – 1.743	0.607
≥ 2 per year	52	24				
<b>Annual hospitalization</b>						
< 2 per year	30	16	0.068	0.903	0.420 – 1.942	0.794
≥ 2 per year	54	26				
<b>Stroke</b>						
Yes	12	2	2.571	3.33	0.710 – 15.643	0.109
No	72	40				
<b>Dactylities</b>						
Yes	42	10	7.924	0.313	0.136 – 0.716	0.006
No	42	32				
<b>ACS</b>						
< 2 per year	44	34	9.692	0.259	0.107 – 0.625	0.002
≥ 2 per year	40	8				
<b>Bone problems</b>						
Yes	6	2	0.267	1.54	0.297 – 7.971	0.605
No	78	40				
<b>Splenomegaly</b>						
Yes	2	2	0.516	0.488	0.066 – 3.590	0.472
No	82	40				
<b>Blood exchange</b>						
Yes	0	2	4.065	1.050	0.981 – 1.123	0.044
No	84	40				

ACS= Acute chest syndrome, VOC= Vaso-Occlusive Crisis

**Table 2. Association between GSTT1 null genotype and clinical manifestations**

Clinical manifestations	GSTT1					
	Present	Null	Chi-square	Odd ratio	Confidence interval 95%	p. value
<b>Gender</b>						
Male	44	34	6.344	2.6	1.224 – 5.472	0.012
Female	16	32				
<b>Anemia appearance</b>						
< 1 year	42	52	1.281	0.628	0.280 – 1.410	0.258
≥ 1 year	18	14				
<b>Blood transfusion</b>						
< 2 per year	26	56	23.84	0.137	0.059 – 0.318	0.000
≥ 2 per year	34	10				
<b>VOC</b>						
< 2 per year	26	24	0.638	1.34	0.654 – 2.738	0.424
≥ 2 per year	34	42				
<b>Annual hospitalization</b>						
< 2 per year	16	30	4.786	0.436	0.206 – 0.924	0.029
≥ 2 per year	44	36				
<b>Stroke</b>						
Yes	12	2	9.164	0.125	0.0267 – 0.585	0.008
No	48	64				
<b>Dactylities</b>						
Yes	30	22	3.602	0.500	0.243 – 1.027	0.059
No	30	44				
<b>ACS</b>						
< 2 per year	40	38	1.101	1.47	0.713 – 3.044	0.294
≥ 2 per year	20	28				
<b>Bone problems</b>						
Yes	2	6	1.752	2.9	0.562 – 14.96	0.203
No	58	60				
<b>Splenomegaly</b>						
Yes	2	2	0.009	1.103	0.151 – 8.088	0.923
No	58	64				
<b>Blood exchange</b>						
Yes	2	0	2.235	0.967	0.922 – 1.013	0.135
No	58	66				

**Table 3. Association between GSTM1/GSTT1 null genotype and some clinical manifestations**

Clinical manifestations	GSTM1/GSTT1					
	Present	Null	Chi-square	Odd ratio	Confidence interval 95%	p. value
<b>Gender</b>						
Male	64	14	0.661	1.5	0.554 – 4.300	0.291
Female	42	6				
<b>Anemia appearance</b>						
< 1 year	74	20	8.093	1.432	1.264 – 1.623	0.004
≥ 1 year	32	0				
<b>Blood transfusion</b>						
< 2 per year	66	16	2.329	2.4	0.757 – 7.764	0.127
≥ 2 per year	40	4				
<b>VOC</b>						
< 2 per year	40	10	1.057	1.65	0.631 – 4.311	0.304
≥ 2 per year	66	10				
<b>Annual hospitalization</b>						
< 2 per year	38	8	0.125	1.2	0.448 – 3.175	0.724
≥ 2 per year	68	12				



Clinical manifestations	GSTM1/GSTT1					
	Present	Null	Chi-square	Odd ratio	Confidence interval 95%	p. value
<b>Stroke</b>						
Yes	14	0	2.972	1.2	1.070 – 1.241	0.085
No	92	20				
<b>Dactylities</b>						
Yes	50	2	9.591	0.124	0.027 – 0.563	0.002
No	56	18				
<b>ACS</b>						
< 2 per year	62	16	3.301	0.352	0.110 – 1.123	0.078
≥ 2 per year	44	4				
<b>Bone problems</b>						
Yes	8	0	1.612	0.283	0.016 – 5.094	0.283
No	98	20				
<b>Splenomegaly</b>						
Yes	4	0	0.779	0.556	0.029 – 10.721	0.697
No	102	20				
<b>Blood exchange</b>						
Yes	2	0	0.383	1.1	0.993 – 1.046	0.536
No	104	20				

*Also the present study found no statistically significance between GSTP1 gene polymorphism and gender variability and clinical manifestations of SCD.*

#### 4. DISCUSSION

Sickle cell anemia (SCA) is a chronic and progressively debilitating medical condition featuring ongoing hemolytic anemia and recurrent acute vaso-occlusive events [10]. It is characterized by a clinical course highly variable, ranging from death in early childhood [11] to a normal life span with few complications [12].

The complex pathophysiology of SCA which can be affected by a number of modifying factors including haplotype of  $\beta$ -globin gene cluster [13], coinheritance of polymorphisms associated with clinical aspects [14,15] and Hemoglobin fetal (Hb F) levels [16], chronic inflammation and oxidative states [17,18] as well as gender [13].

Human GSTs have been well characterized as ethnic-dependent polymorphism frequencies and largely divergent among populations around the world [19,20].

There are published reports about the association between GSTM1 and GSTT1 and GSTP1 polymorphisms and Sickle cell diseases but to date no study published in Africa except in Egypt, so this study aimed to fill the gap by investigating the possible association between the presence of GSTM1, GSTT1 and GSTP1 genes polymorphisms and SCD severity,

diversity and complications in pediatric Sudanese patients.

In present study, GSTM1null genotype was found to be present in male more than female (OR=2.6 and p=0.002) and this agreed with another study done in Sudan [21], they observed male had GSTM1 null genotype more than female (58.8% and 41.7%) respectively.

Also in this study, the GSTT1null genotype found to be present in female more than male (OR=2.6 and p=0.012), and this agreed with meta-analysis study [22] did report a significantly higher frequency of GSTT1 deletion among healthy Caucasian females, yet was not able to explain it on biological grounds, since GSTT1 gene is not located on the sex chromosome and [23] observed the female (68.6%) to male ratio (31.4%) was high which might explain the higher frequency of GSTT1 deletion among female controls. the difference between males and females may also be related to gender-associated expression of the GST family enzymes [24,25], or the influence of sex hormones, importance of which GST regulation is well established in rodent models [26,27].

Also, the GSTM1null genotype trend to be protective from development of Dactylitis (OR=0.313 and p=0.006) and associated with increase requirement to blood exchange

(OR=1.1 and p=0.044), to date no any published reports agreed or contrast this finding.

Also, GSTM1 null genotype reduce risk of ACS (OR=0.3 and p=0.002), in contrast to our finding, in Egypt [28], and in Brazil [29], they observed the GSTM1 null genotype was significantly associated with ACS.

We also observed the GSTM1null genotype increased risk to stroke (OR=3.33 and p=0.109), and this association not statistically significant, this agreed with study done in Brazil [29], they observed the patients with GSTM1 null showed a risk 3.9 times higher to develop stroke, Vasculopathy has been implicated in the development of pulmonary hypertension, stroke, leg ulcers and priapism, particularly associated with hemolytic severity.

In this study, there are no significant association between GSTM1 null genotype and the time of disease appearance, annual hospitalization and splenomegaly, to date, no study involving the polymorphism of GSTM1 gene and these clinical manifestations of SCD has been published, and no significant association between GSTM1 null genotype and the frequency of blood transfusion, and this agreed with another studies in Egypt [28,30] and no significant association with VOC, bone problems.

The GSTM1 gene contains four alleles and most widely studied, GSTM1 polymorphism M1\*A 0.2 is associated with decreased risk of bladder and breast cancer in Caucasians, M1\*B 0.2 with decreased risk of pituitary adenomas; M1\*O 0.59 has been shown to increase the risk of lung, colon, bladder, and post-menopausal breast cancer. GSTM1\*A has been associated with a decreased risk of bladder cancer and has an allele frequency of 20% [31].

Evolution from the basic identification of polymorphic sites has provided the tools to discover the genetic complexity that affects genotype–phenotype correlation [16].

For GSTT1 null genotype, this study found no significant association with the time of anemia appearance, Dactylities and splenomegaly.

In this study, the GSTT1null genotype associated with decreased requirements to blood transfusion (OR=0.137 and p< 0.001), in contrast to our finding, in Egypt [28], found the GSTT1 null

genotype was associated with significantly increased requirement of blood transfusion, and in the contrast for both, another studies in India [32], observed the requirement of blood transfusion is not dependent on GST deletions, and in Egypt [30] found no significant association between GST genotypes and transfusion frequency.

Also GSTT1 null genotype associated with reduce frequency of annual hospitalization (OR=0.436 and p=0.029), but we don't find any published reports studied this association to confirm or contrast our finding.

And GSTT1 null genotype associated with reduced risk to development of stroke (OR=0.125 and p=0.008) and this agreed with [29] found (OR=0.55 and p=0.45) but no associated significance.

Also, in present study, GSTT1 null genotype increased risk of ACS and bone problems and VOC (OR=1.47 and p=0.294), (OR=1.47 and p=0.294) and (OR=1.34 and p=0.424) respectively, and this association not statistically significant and this agreed with another studies [28,29,33].

The previous reports demonstrated that patients with SCD are subject to increased oxidative stress mainly in ACS [34].

Polymorphism of both GSTM1 and GSTT1 genes found to be associated with appearance of disease before one year of age (OR=1.43 and p=0.004) and trend to be protective from development of Dactylitis (OR=0.124 and p=0.002) but we don't find published reports confirm or contrast this finding.

Also, this study found no statistically significance between GSTM1/ GSTT1null genotype and gender variability, annual hospitalization, splenomegaly and blood exchange, no previous reports confirm or contrast this finding, and no statistically significance with VOC, frequency of blood transfusion, ACS, stroke and bone problems, and this agreed with previous studies [28,29,30,35], except [29], contrast our finding only in ACS.

In this study, there are no statistically significance between GSTP1 gene polymorphism and gender variability and clinical manifestations of SCD, and this agreed with another studies in Egypt [28,30], they found the non-wild-type

GSTP1 polymorphism was not associated with clinical manifestations of SCD.

In a Brazilian cohort [36] they found no association between GSTM1 and GSTT1 gene polymorphism and oxidative stress parameters in SCD patients, also [37] Pooled analysis of GSTT1 and GSTP1 polymorphisms revealed significantly increased risk of complications in SCD, while GSTM1 null genotypes did not show association with SCD complications. Significant between study heterogeneity ( $I^2 > 50\%$ ) was observed for in all three polymorphisms (GSTM1=68.7%), (GSTT1=71.6%), (GSTP1=83%). These contradictory results may be explained by the fact that Silva and colleagues studied the relation between GST gene polymorphisms and biochemical markers of oxidative stress, not the clinical manifestations of SCD. Thus, biochemical markers of oxidative stress may not be an accurate marker for measuring SCD severity. In addition, different ethnicity could explain this contradiction [29].

The difference between the clinical manifestations of this study and previous studies make complexity in detecting the association between these polymorphisms and SCD severity and diversity, this study were the first in the studying of some clinical manifestations to date no study published before such as, the time of disease appearance, frequency of annual hospitalization, Dactylities, splenomegaly and blood exchange in SCD patients.

The unexpected clinical diversity in a monogenic disease such as SCD has led to countless genetic studies and current knowledge has evolved, together with technological development in molecular biology [34].

Moreover, since GST is a multigene family, one or two single polymorphisms and null genotype expression may not be sufficient to alter the overall enzymatic and antioxidant capacity [38].

Previous studies have shown that there is marked geographical and ethnic variation in the distribution of genes for polymorphic GSTs [39].

The protective effects found in this study in some clinical manifestations and differences in the associations or lack of them in the previous studies may be due to gene–gene interactive effects on GSTs and genotype–phenotype correlation, previous studies postulated, there are another mechanism for defense against

oxidative stress, erythrocyte have a self-sustaining activity of antioxidant defense enzymes, including superoxide dismutase (SOD), catalase (CAT), glutathione peroxidase (GPx), and glutathione reductase (GR), in addition to low-molecular-weight antioxidants, such as glutathione(GSH) and vitamins E and C [40], RBC superoxide dismutase (SOD) activity has been shown to increase in some SCD studies [41,42], The primary antioxidant enzymes against superoxide radicals include superoxide dismutase (SOD), catalase (CAT), and glutathione peroxidase (GPx) [43]. [44] Observed higher CAT activity in the plasma of SS children compared to AA controls, and [45] found higher GPX activity in young adults with SCA compared to healthy individuals.

Nur et al. [46] demonstrated an increased GSSG efflux in sickle erythrocytes that can be a protective action, because GSSG is an oxidant itself and its enhanced excretion under oxidative conditions prevents the potentially toxic effects of its intracellular accumulation [47]. But increased GSSG efflux could play an important role in GSH depletion in these cells.

Also, G6PD is an important enzyme related to the antioxidant defense in erythrocytes [36], Higher activity of this enzyme in patients with sickle cell disease was found than in the control group, previously reported that erythrocytes from patients with sickle cell disease have an increased percentage of reticulocytes, while the activity of G6PD in reticulocytes is normal, but declines exponentially as the red cells age [48].

Also these polymorphisms had protective effect in other diseases; some reports found that, the decreased GST activity served to protect the host erythrocytes against the invading malarial parasite by up-regulating oxidative defense mechanisms [49], homozygous deletion of GSTM1 may interfere with iron chelation therapy and lead to slow unloading of liver iron [50].

GST polymorphisms not only influence susceptibility to disease, but they also appear to influence responsiveness to cancer chemotherapeutic agents [51], protective role for cancer [52], protection from having ALL [53], Diabetic retinopathy in type 1 diabetes [54], Diabetic retinopathy in type 2 diabetes [55,56], Protection against colon cancer [57], protection against hearing impairment in testicular cancer patients [58], protective effect male infertility [59,60]. The GSTT1 null genotype had a

protective effect on the development of schizophrenia and the combination of null genotypes of the GSTT1 and GSTM1 genes was made at a lower risk of schizophrenia [61, 62], protection against coronary artery disease [63].

Due to little papers like this study are published and there are difference in clinical manifestations and population, limited information about this subject has been published, the absence of data obtained on phenotypic effects of GST family genes, the diversity of the clinical manifestations and severity among patients with similar GST polymorphisms may be due to the presence of other modifying genes effects on these genes, Future large studies evaluating GST genes in addition to other antioxidant genes are needed to provide evidence on gene-gene interactive effects on SCD, which makes further functional studies a necessity to determine the exact genotype-phenotype correlation, also any reported differences between studies might be attributed to sampling error.

Most of studies done before agreed with our study in most finding in the same clinical.

## 5. CONCLUSION

In conclusion, this study found, The GSTM1null genotype was found to be present in male more than female and trend to be protective from development of Dactylitis and may reduce risk to develop ACS, while this polymorphism may increase requirements to blood exchange.

The GSTT1null genotype found to be present in female more than male and this polymorphism may reduce requirements to blood transfusion and annual hospitalization and may reduce risk to development of stroke.

Polymorphism of both GSTM1 and GSTT1 found to be associated with appearance of disease before one year of age and trend to be protective from development of Dactylitis.

Also, there are no statistically significance between GSTP1 gene polymorphism and gender variability and clinical manifestations of SCD.

This study were the first in the studying of some clinical manifestations to date no study published before, as time of disease appearance, frequency of annual hospitalization, Dactylities, splenomegaly and blood exchange in SCD

patients and was the first done in Africa except Egypt.

The polymorphism of GSTM1, GSTT1 and GSTP1 genes effect on clinical manifestations diversity of SCD. Future large studies evaluating GST genes are needed in order to minimize severity of their symptoms by using prophylactic antioxidants and other measures that improve their reductive defense mechanisms.

## CONSENT

The study protocol was in accordance with the local hospital research guidelines and informed consent was obtained from patient's legal representatives.

## ETHICAL APPROVAL

Approval was received from ministry of health in Khartoum/Sudan and including the Hospital Ethics commission.

## ACKNOWLEDGEMENTS

The authors would like to thank all the people for their assist and directing in preparation this research, the most thankful for my supervisors Dr. OzazYagoup Mohammed Ahmed and professor/ Huda Mohammed Haroun and Dr. Muzamil Mahdi Abdel Hamid and the patients and controls enrolled in this study

## COMPETING INTERESTS

Authors have declared that no competing interests exist.

## REFERENCES

1. Weatherall DJ. The inherited diseases of hemoglobin are an emerging global health burden. *Blood*. 2010;115(22):4331-6. DOI:10.1182/blood-2010-01-251348. Epub 2010 Mar 16. PMID: 20233970
2. Serjeant GR, Serjeant BE, Mohan JS, Clare A. Leg ulceration in sickle cell disease: medieval medicine in a modern world. *Hematol Oncol Clin North Am*. 2005; 19(5):943-56, viii-ix. DOI: 10.1016/j.hoc.2005.08.005 PMID: 16214654
3. Lettre G, Sankaran VG, Bezerra MA, Araújo AS, Uda M, Sanna S, Cao A, Schlessinger D, Costa FF, Hirschhorn JN,

- Orkin SH. DNA polymorphisms at the BCL11A, HBS1L-MYB, and beta-globin loci associate with fetal hemoglobin levels and pain crises in sickle cell disease. *Proc Natl Acad Sci USA*. 2008;105(33):11869-74. DOI: 10.1073/pnas.0804799105 Epub 2008 Jul 30 PMID: 18667698; PMCID: PMC2491485
4. Rogers ZR. Priapism in sickle cell disease. *Hematol Oncol Clin North Am*. 2005; 19(5):917-28, viii. DOI: 10.1016/j.hoc.2005.08.003 PMID: 16214652
  5. Kato GJ, McGowan V, Machado RF, Little JA, Taylor J 6th, Morris CR, Nichols JS, Wang X, Poljakovic M, Morris SM Jr, Gladwin MT. Lactate dehydrogenase as a biomarker of hemolysis-associated nitric oxide resistance, priapism, leg ulceration, pulmonary hypertension, and death in patients with sickle cell disease. *Blood*. 2006;107(6):2279-85. DOI: 10.1182/blood-2005-06-2373 Epub 2005 Nov 15 PMID: 16291595; PMCID: PMC1895723
  6. Reid M, Jahoor F. Glutathione in disease. *Curr Opin Clin NutrMetab Care*. 2001; 4(1):65-71. DOI:10.1097/00075197-200101000-00012 PMID: 11122562
  7. Franco R, Schoneveld OJ, Pappa A, Panayiotidis MI. The central role of glutathione in the pathophysiology of human diseases. *Arch PhysiolBiochem*. 2007;113(4-5):234-58. DOI: 10.1080/13813450701661198 PMID: 18158646
  8. Kavishe RA, Koenderink JB, McCall MB, Peters WH, Mulder B, Hermsen CC, Sauerwein RW, Russel FG, Van der Ven AJ. Short report: Severe Plasmodium falciparum malaria in Cameroon: Associated with the glutathione S-transferase M1 null genotype. *Am J Trop Med Hyg*. 2006;75(5):827-9. PMID: 17123972
  9. Fertrin KY, Costa FF. Genomic polymorphisms in sickle cell disease: IMPLICATIONS for clinical diversity and treatment. *Expert Rev Hematol*. 2010; 3(4):443-58. DOI: 10.1586/ehm.10.44 PMID: 21083035
  10. Ware RE. How I use hydroxyurea to treat young patients with sickle cell anemia. *Blood*. 2010;115(26):5300-11. DOI: 10.1182/blood-2009-04-146852 Epub 2010 Mar 11 PMID: 20223921; PMCID: PMC2902131
  11. Leikin SL, Gallagher D, Kinney TR, Sloane D, Klug P, Rida W. Mortality in children and adolescents with sickle cell disease. Cooperative Study of Sickle Cell Disease. *Pediatrics*. 1989;84(3):500-8. PMID: 2671914
  12. Serjeant GR, Higgs DR, Hambleton IR. Elderly survivors with homozygous sickle cell disease. *N Engl J Med*. 2007;356(6):642-3. DOI: 10.1056/NEJMc066547 PMID: 17287491
  13. Kulozik AE, Wainscoat JS, Serjeant GR, Kar BC, Al-Awamy B, Essan GJ, Falusi AG, Haque SK, Hilali AM, Kate S, et al. Geographical survey of beta S-globin gene haplotypes: Evidence for an independent Asian origin of the sickle-cell mutation. *Am J Hum Genet*. 1986; 39(2):239-44. PMID: 3752087; PMCID: PMC1683923
  14. Steinberg MH, Adewoye AH. Modifier genes and sickle cell anemia. *Curr Opin Hematol*. 2006;13(3):131-6. DOI:10.1097/01.moh.0000219656.50291.73 PMID: 16567954.
  15. Steinberg MH. Predicting clinical severity in sickle cell anaemia. *Br J Haematol*. 2005; 129(4):465-81. DOI: 10.1111/j.1365-2141.2005.05411.x PMID: 15877729
  16. Steinberg MH. Management of sickle cell disease. *N Engl J Med*. 1999;340(13):1021-30. DOI: 10.1056/NEJM199904013401307 PMID: 10099145
  17. Conran N, Franco-Penteado CF, Costa FF. Newer aspects of the pathophysiology of sickle cell disease vaso-occlusion. *Hemoglobin*. 2009;33(1):1-16. DOI: 10.1080/03630260802625709 PMID: 19205968
  18. Fibach E, Rachmilewitz E. The role of oxidative stress in hemolytic anemia. *Curr Mol Med*. 2008;8(7):609-19. DOI: 10.2174/156652408786241384 PMID: 18991647
  19. Mo Z, Gao Y, Cao Y, Gao F, Jian L. An updating meta-analysis of the GSTM1, GSTT1, and GSTP1 polymorphisms and prostate cancer: A HuGE review. *Prostate*. 2009;69(6):662-88. DOI: 10.1002/pros.20907 PMID: 19143011.

20. Rossini A, Rapozo DC, Amorim LM, Macedo JM, Medina R, Neto JF, Gallo CV, Pinto LF. Frequencies of GSTM1, GSTT1, and GSTP1 polymorphisms in a Brazilian population. *Genet Mol Res.* 2002;1(3):233-40.  
PMID: 14963830
21. Jamel, Hiba Badr Eldin Khalil. GSTM1 polymorphisms and severity of sickle cell Anaemia. unpublished master degree research, Alneelin University Sudan, Khartoum; 2017.  
Available:<http://search.mandumah.com/Record/831603>.
22. Garte S, Gaspari L, Alexandrie AK, Ambrosone C, Autrup H, Autrup JL, Baranova H, Bathum L, Benhamou S, Boffetta P, Bouchardy C, Breskvar K, Brockmoller J, Cascorbi I, Clapper ML, Coutelle C, Daly A, Dell'Omo M, Dolzan V, Dresler CM, Fryer A, Haugen A, Hein DW, Hildesheim A, Hirvonen A, Hsieh LL, Ingelman-Sundberg M, Kalina I, Kang D, Kihara M, Kiyohara C, Kremers P, Lazarus P, Le Marchand L, Lechner MC, van Lieshout EM, London S, Manni JJ, Maugard CM, Morita S, Nazar-Stewart V, Noda K, Oda Y, Parl FF, Pastorelli R, Persson I, Peters WH, Rannug A, Rebbeck T, Risch A, Roelandt L, Romkes M, Ryberg D, Salagovic J, Schoket B, Seidegard J, Shields PG, Sim E, Sinnet D, Strange RC, Stücker I, Sugimura H, To-Figueras J, Vineis P, Yu MC, Taioli E. Metabolic gene polymorphism frequencies in control populations. *Cancer Epidemiol Biomarkers Prev.* 2001;10(12):1239-48.  
PMID: 11751440.
23. Moyassar Ahmad Zaki, Thanaa Fathy Moghazy, Mona Mohamed Kamal El-Deeb, Amira Hussein Mohamed, Noha Arafa Ahmed Mohamed. Glutathione S-transferase M1, T1 and P1 gene polymorphisms and the risk of developing type 2 diabetes mellitus in Egyptian diabetic patients with and without diabetic vascular complications, Alexandria Journal of Medicine. 2015;51(1):73-82.  
DOI: 10.1016/j.ajme.2014.03.003
24. Singhal SS, Saxena M, Awasthi S, Ahmad H, Sharma R, Awasthi YC. Gender related differences in the expression and characteristics of glutathione S-transferases of human colon. *Biochim Biophys Acta.* 1992;1171(1):19-26.  
DOI: 10.1016/0167-4781(92)90135-m  
PMID: 1420361.
25. Singhal SS, Saxena M, Awasthi S, Mukhtar H, Zaidi SI, Ahmad H, Awasthi YC. Glutathione S-transferases of human skin: qualitative and quantitative differences in men and women. *Biochim Biophys Acta.* 1993;1163(3):266-72.  
DOI: 10.1016/0167-4838(93)90161-j  
PMID: 8507665
26. Lash LH, Qian W, Putt DA, Jacobs K, Elfarrar AA, Krause RJ, Parker JC. Glutathione conjugation of trichloroethylene in rats and mice: sex-, species-, and tissue-dependent differences. *Drug Metab Dispos.* 1998;26(1):12-9.  
PMID: 9443846
27. Catania VA, Luquita MG, Sánchez Pozzi EJ, Mottino AD. Quantitative and qualitative gender-related differences in jejunal glutathione S-transferase in the rat effect of testosterone administration. *Life Sci.* 2000;68(4):467-74.  
DOI: 10.1016/s0024-3205(00)00948-6  
PMID: 11205895
28. Ellithy HN, Yousri S, Shahin GH. Relation between glutathione S-transferase genes (GSTM1, GSTT1, and GSTP1) polymorphisms and clinical manifestations of sickle cell disease in Egyptian patients. *Hematology.* 2015;20(10):598-606.  
DOI: 10.1179/1607845415Y.0000000013  
Epub 2015 Apr 16. PMID: 25880856
29. de Oliveira Filho RA, Silva GJ, de Farias Domingos I, Hatzlhofer BL, da Silva Araújo A, de Lima Filho JL, Bezerra MA, Martins DB, de Araújo RF. Association between the genetic polymorphisms of glutathione S-transferase (GSTM1 and GSTT1) and the clinical manifestations in sickle cell anemia. *Blood Cells Mol Dis.* 2013;51(2):76-9.  
DOI: 10.1016/j.bcmd.2013.03.003  
Epub 2013 Apr 13. PMID: 23590899
30. Shiba HF, El-Ghamrawy MK, Shaheen IA, Ali RA, Mousa SM. Glutathione S-transferase gene polymorphisms (GSTM1, GSTT1, and GSTP1) in Egyptian pediatric patients with sickle cell disease. *Pediatr Dev Pathol.* 2014;17(4):265-70.  
DOI: 10.2350/14-03-1452-OA.1  
Epub, 2014. PMID: 24840051
31. Smith G, Stanley LA, Sim E, Strange RC, Wolf CR. Metabolic polymorphisms and cancer susceptibility. *Cancer Surv.* 1995;25:27-65.  
PMID: 8718512.
32. Sanjay P, Mani MR, Sweta P, Vineet S, Kumar AR, Renu S. Prevalence of

- glutathione S-transferase gene deletions and their effect on sickle cell patients. *Rev Bras Hematol Hemoter.* 2012;34(2):100-2. DOI: 10.5581/1516-8484.20120030 PMID: 23049400; PMCID: PMC3459392
33. Klings ES, Farber HW. Role of free radicals in the pathogenesis of acute chest syndrome in sickle cell disease. *Respir Res.* 2001;2(5):280-5. DOI: 10.1186/rr70 Epub 2001 Jul 13 PMID: 11686897; PMCID: PMC59517
34. Johnson CS. The acute chest syndrome. *Hematol Oncol Clin North Am.* 2005; 19(5):857-79, vi-vii. DOI: 10.1016/j.hoc.2005.08.001 PMID: 16214648
35. Rabab MA, Bothina MH. GSTM1 and GSTT1 polymorphism in Egyptian sickle cell anemia patients. *Int J Hematol Oncol/UHOD: Uluslararası Hematoloji Onkoloji Dergisi.* 2013;23:269–275.
36. Silva DGH, Belini Junior E, de Almeida EA, Bonini-Domingos CR. Oxidative stress in sickle cell disease: An overview of erythrocyte redox metabolism and current antioxidant therapeutic strategies. *Free Radic Biol Med.* 2013;65:1101-1109. DOI:10.1016/j.freeradbiomed.2013.08.181 Epub 2013 Aug 31. PMID: 24002011
37. Verma HK, Swarnaker S, Lakkakula BV. Genetic association of GSTM1, GSTT1, and GSTP1 polymorphisms with sickle cell disease complications: A systematic review and meta-analysis. *Meta Gene.* 2020; 100815.
38. Solak B, Karkucak M, Turan H, Ocakoğlu G, Özemri Sağ Ş, Uslu E, Yakut T, Erdem T. Glutathione S-Transferase M1 and T1 gene polymorphisms in patients with chronic plaque-type psoriasis: A case-control study. *Med Princ Pract.* 2016;25(2): 155-8. DOI: 10.1159/000442165 Epub 2015 Nov 4 PMID: 26535568; PMCID: PMC5588339
39. Romano G, Sgambato A, Supa A, et al. N-acetyltransferase and glutathione S-transferase polymorphisms as risk factors for cancer in Southern Italian patients. *Ann Oncol.* 2003;14(4):83-84.
40. Perrone S, Tataranno ML, Stazzoni G, Del Vecchio A, Buonocore G. Oxidative injury in neonatal erythrocytes. *J Matern Fetal Neonatal Med.* 2012;25(Suppl 5):104-8. DOI: 10.3109/14767058.2012.715471 PMID: 23025782.
41. Das SK, Nair RC. Superoxide dismutase, glutathione peroxidase, catalase and lipid peroxidation of normal and sickled erythrocytes. *Br J Haematol.* 1980;44(1): 87-92. DOI: 10.1111/j.1365-2141.1980.tb01186.x PMID: 7378296.
42. Nur E, Verwijs M, deWaart DR, Schnog JJ, Otten HM, Brandjes DP, Biemond BJ, Elferink RP. Increased efflux of oxidized glutathione (GSSG) causes glutathione depletion and potentially diminishes antioxidant defense in sickle erythrocytes. *Biochim. Biophys. Acta.* 2011;1812:1412–1417.
43. Aslan M, Ryan TM, Adler B, Townes TM, Parks DA, Thompson JA, Tousson A, Gladwin MT, Patel RP, Tarpey MM, Batinic-Haberle I, White CR, Freeman BA. Oxygen radical inhibition of nitric oxide-dependent vascular function in sickle cell disease. *Proc Natl Acad Sci USA.* 2001; 98(26):15215-20. DOI: 10.1073/pnas.221292098 PMID: 11752464; PMCID: PMC65009
44. Gueye Tall F, Martin C, Ndour EHM, Faes C, Déme Ly I, Pialoux V, Connes P, Gueye PM, Ndiaye Diallo R, Renoux C, Diagne I, Diop PA, Cissé A, Sall PL, Joly P. Influence of oxidative stress biomarkers and genetic polymorphisms on the clinical severity of hydroxyurea-free senegalese children with sickle cell anemia. *Antioxidants (Basel).* 2020;9(9):863. DOI: 10.3390/antiox9090863 PMID: 32937882; PMCID: PMC7555380
45. Faes C, Balayssac-Siransy E, Connes P, Hivert L, Danho C, Bogui P, Martin C, Pialoux V. Moderate endurance exercise in patients with sickle cell anaemia: Effects on oxidative stress and endothelial activation. *Br J Haematol.* 2014;164(1): 124-30. DOI: 10.1111/bjh.12594 Epub 2013 Oct 8. PMID: 24903630
46. Manfredini V, Lazzaretti LL, Griebeler IH, Santin AP, Brandão VD, Wagner S, Castro SM, PeralbaMdo C, Benfato MS. Blood antioxidant parameters in sickle cell anemia patients in steady state. *J Natl Med Assoc.* 2008;100(8):897-902. DOI: 10.1016/s0027-9684(15)31402-4 PMID: 18717139
47. Prchal J, Srivastava SK, Beutler E. Active transport of GSSG from reconstituted erythrocyte ghosts. *Blood.* 1975;46(1): 111-7.

- PMID: 1131422
48. McGann PT, Ware RE. Hydroxyurea for sickle cell anemia: what have we learned and what questions still remain? *Curr Opin Hematol.* 2011;18(3):158-65.  
DOI: 10.1097/MOH.0b013e32834521dd  
PMID: 21372708; PMCID: PMC3181131
  49. PC. Glutathione S-transferase Activity in Diagnostic Pathology. *Metabolomics.* 2015; 5:153.  
DOI: 10.4172/2153-0769.1000153
  50. Puri L, Flanagan JM, Kang G, Ding J, Bi W, McCarville BM, Loeffler RB, Tipirneni-Sajja A, Villavicencio M, Crews KR, Hillenbrand CM, Hankins JS. GSTM1 and Liver Iron Content in Children with Sickle Cell Anemia and Iron Overload. *J Clin Med.* 2019;8(11):1878.  
DOI: 10.3390/jcm8111878  
PMID: 31694285; PMCID: PMC6912836
  51. Enzyme Systems that Metabolise Drugs and Other Xenobiotic. Edited by C. Ioannides. John Wiley & Sons Ltd; 2002.
  52. Yadav DS, Devi TR, Ihsan R, Mishra AK, Kaushal M, Chauhan PS, Bagadi SA, Sharma J, Zamoawia E, Verma Y, Nandkumar A, Saxena S, Kapur S. Polymorphisms of glutathione-S-transferase genes and the risk of aerodigestive tract cancers in the Northeast Indian population. *Genet Test Mol Biomarkers.* 2010;14(5):715-23.  
DOI: 10.1089/gtmb.2010.0087  
Epub 2010 Sep 20. PMID: 20854097.
  53. Genetic Polymorphisms of Glutathione-S-Transferase P1,T1 and M1 in Pediatric Patients with Acute Lymphocytic Leukemia in a Philippine Tertiary Hospital Maria Melanie Liberty B. Alcausin1, Pamela D. Fajardo1,Catherine Lynn T. Silao1,2, Amy Goleta-Dy1,Eufrosina A. Melendres1, Eva Maria C. Cutiongco-dela Paz1,2, Carmencita David-Padilla1,2.
  54. Hovnik T, Dolzan V, Bratina NU, Podkrajsek KT, Battelino T. Genetic polymorphisms in genes encoding antioxidant enzymes are associated with diabetic retinopathy in type 1 diabetes. *Diabetes Care.* 2009;32(12):2258-62.  
DOI: 10.2337/dc09-0852  
Epub 2009 Sep 14  
PMID: 19752172; PMCID: PMC2782987
  55. Cilenšek I, Mankoč S, Petrovič MG, Petrovič D. GSTT1 null genotype is a risk factor for diabetic retinopathy in Caucasians with type 2 diabetes, whereas GSTM1 null genotype might confer protection against retinopathy. *Dis Markers.* 2012;32(2):93-9.  
DOI: 10.3233/DMA-2011-0863  
PMID: 22377702; PMCID: PMC3826588
  56. Dadbinpour A, Sheikhha MH, Darbouy M, Afkhami-Ardekani M. Investigating GSTT1 and GSTM1 null genotype as the risk factor of diabetes type 2 retinopathy. *J Diabetes Metab Disord.* 2013;12:48.
  57. Lin HJ, Probst-Hensch NM, Louie AD, Kau IH, Witte JS, Ingles SA, Frankl HD, Lee ER, Haile RW. Glutathione transferase null genotype, broccoli, and lower prevalence of colorectal adenomas. *Cancer Epidemiol Biomarkers Prev.* 1998;7(8):647-52.  
PMID: 9718215
  58. Oldenburg J, Kraggerud SM, Brydøy M, Cvancarova M, Lothe RA, Fosha SD. Association between long-term neurotoxicities in testicular cancer survivors and polymorphisms in glutathione-s-transferase-P1 and -M1, a retrospective cross sectional study. *J Transl Med.* 2007; 5:70.  
DOI: 10.1186/1479-5876-5-70  
PMID: 18162130; PMCID: PMC2245909
  59. Bekris LM, Shephard C, Peterson M, Hoehna J, Van Yserloo B, Rutledge E, Farin F, Kavanagh TJ, Lernmark A. Glutathione-s-transferase M1 and T1 polymorphisms and associations with type 1 diabetes age-at-onset. *Autoimmunity.* 2005;38(8):567-75.  
DOI: 10.1080/08916930500407238  
PMID: 16390810
  60. Jaiswal D, Sah R, Agrawal NK, Dwivedi US, Trivedi S, Singh K. Combined effect of GSTT1 and GSTM1 polymorphisms on human male infertility in north Indian population. *Reprod Sci.* 2012;19(3):312-6.  
DOI: 10.1177/1933719111424451  
PMID: 22383780
  61. Zhang X, Yang J, Liu X, Zhao G, Li X, Xun G. Glutathione S-transferase gene polymorphisms (GSTT1 and GSTM1) and risk of schizophrenia: A case-control study in Chinese Han population. *Medicine (Baltimore).* 2020;99(36):e21918.  
DOI: 10.1097/MD.00000000000021918  
PMID: 32899025; PMCID: PMC7478483
  62. Raffa M, Lakhdar R, Ghachem M, Barhoumi S, Safar MT, Bel Hadj Jrad B, Haj Khelil A, Kerkeni A, Mechri A. Relationship between GSTM1 and GSTT1 polymorphisms and schizophrenia: a case-control study in a Tunisian population. *Gene.* 2013;512(2):282-5.



- DOI: 10.1016/j.gene.2012.10.031  
Epub 2012 Oct 26. PMID: 23107768
63. Girisha KM, Gilmour A, Mastana S, Singh VP, Sinha N, Tewari S, Ramesh V, Sankar VH, Agrawal S. T1 and M1 polymorphism in glutathione S-transferase gene and coronary artery disease in North Indian population. Indian J Med Sci. 2004; 58(12):520-6. PMID: 15627678.

© 2021 Naif Taleb et al.; This is an Open Access article distributed under the terms of the Creative Commons Attribution License (<http://creativecommons.org/licenses/by/4.0>), which permits unrestricted use, distribution, and reproduction in any medium, provided the original work is properly cited.

*Peer-review history:*  
*The peer review history for this paper can be accessed here:*  
<http://www.sdiarticle4.com/review-history/66916>